



Champion Pump



PUMPS

- SUMP
- EFFLUENT
- SEWAGE
- NON-CLOG
- GRINDER
- UTILITY
- BATTERY BACK-UP

BASINS

- FIBERGLASS
- POLYETHYLENE
- STRUCTURAL FOAM

PACKAGED LIFT STATIONS

- SIMPLEX
- DUPLEX
- SPECIALTY

ACCESSORIES

- CONTROL PANELS
- FLOAT SWITCHES
- HIGH WATER ALARMS
- LIFT OUT SYSTEMS
- FLOAT BRACKETS
- SS CHAIN

***MOST PUMPS THROUGH 60HP
SHIP WITHIN 24 HOURS!***

CHAMPION PUMP COMPANY, INC. | PO BOX 528, ASHLAND, OH 44805
PHONE: 419-281-4500 | WWW.CHAMPIONPUMP.COM | SALES@CHAMPIONPUMP.COM

Champion Pump

Having worked for large corporations where customers and employees can get lost in the shuffle, the founders of Champion Pump had the desire to form a corporation that treats employees, vendors, and customers like partners and friends. We believe that if we take care of our customers first, everything else will take care of itself. Our goal is to be able to provide you with all of your pump requirements. If you need a pump that we do not make, we will try to find it for you.

Our goal at Champion Pump Company is to be a true CHAMPION! A true Champion is Better than the Best, Greater than the Greatest and Mightier than the Mightiest. We will provide our customers with a Champion Product, Champion Service and a Champion Attitude! Our goal is to give back to our community and to our customers, and to be partners and friends with both. Basic principles we use in our everyday business are Honesty, Integrity, Kindness, Gentleness & Self-control and we give our customers uncompromising personalized service.

Every pump tested in water to ensure pump meets performance curve.



FEATURES/BENEFITS

PERFORMANCE

- Heads up to 20' TDH
- Flows up to 42 GPM

MOTOR

- High efficient, 115v, oil filled, permanent split capacitor motor with upper and lower ball bearings and thermal overload protection
- Constant bearing lubrication
- Maximum motor cooling
- Runs cooler and lasts longer
- Internal overload protection
- Quiet operation
- Fasteners and shaft made from rugged, corrosion resistant stainless steel

SEAL DESIGN

- Mechanical with secondary dynamic lip seal
- Provides added leakage protection

IMPELLER DESIGN

- Non-clog style vortex impeller
- Designed to help reduce clogging by foreign material

POWER CORD

- Sealed entry quick disconnect power cords
- Prevents water from entering the motor housing through a cut cord
- Available in lengths up to 100'

SWITCH

- Piggy-back switch design
- Defective switches can be diagnosed over the phone
- Pump can be operated manually or supplied with other piggy-back switches
- Switch can be replaced without having to replace the pump

APPLICATIONS

Basements, dewatering, and septic systems

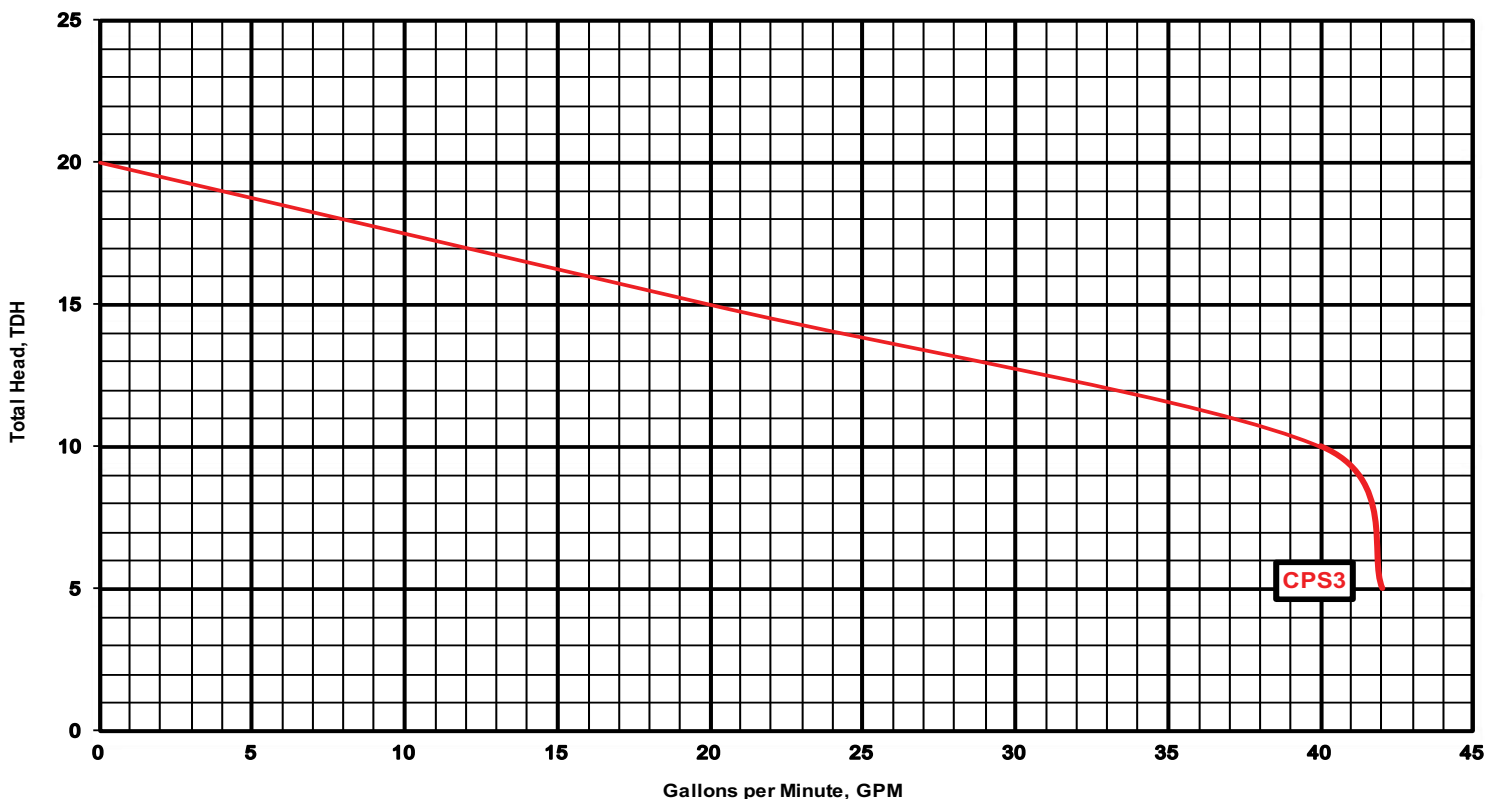


Wide-Angle Float

Vertical Float

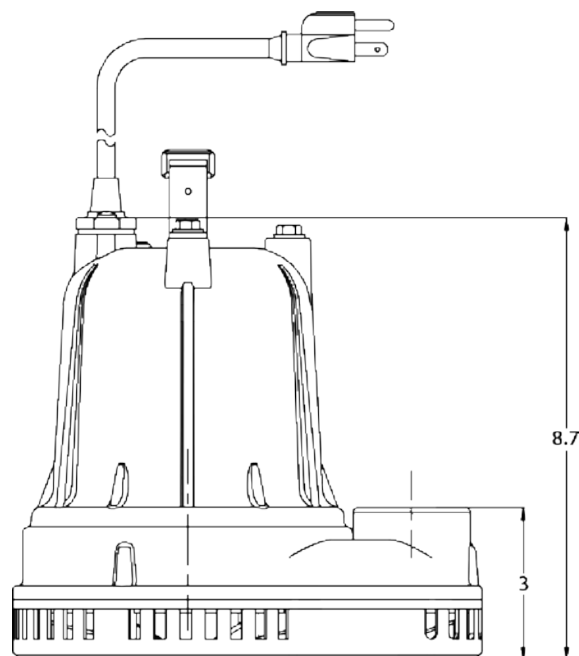
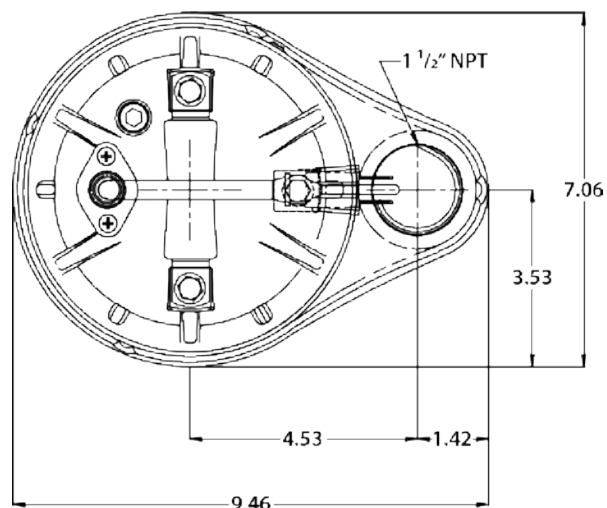
1/3 HP submersible pumps, built for reliability, handle up to 1/4" solids with 1 1/2" discharge

PERFORMANCE CURVE



TECHNICAL DATA

DISCHARGE	1-1/2" NPT. vertical standard
SOLIDS HANDLING	1/4"
LIQUID TEMPERATURE	140 Degrees F. (Intermittent)
MOTOR HOUSING	Cast Iron
VOLUTE	Cast Iron
SEAL PLATE	Cast Iron
IMPELLER	Engineered glass filled thermoplastic/ Vortex
SHAFT	Nickel plated steel
SHAFT SEAL (SINGLE SEAL)	Mechanical with secondary dynamic lip seal, carbon rotating face, ceramic stationary face, Buna-N elastomer, 300 series stainless steel hardware
BEARINGS (UPPER & LOWER)	Single row, ball, oil lubricated
HARDWARE	300 Series stainless steel
O-RINGS	Buna-N
CORD	10' Length standard. Up to 100' available. (UL/CUL) Listed 16 AWG, Type SJTW
MOTOR (SINGLE PHASE)	1/3 HP 1750 RPM, 60 Hz, NEMA L Includes overload protection in the motor, oil filled, class B permanent split capacitor
WEIGHT	25 lbs. (Manual)



MODEL(S) INFORMATION

MODEL	HP	VOLTS	PHASE	AMPS	CORD LENGTH	SWITCH
CPS3-11	1/3	115	1	4	10'	Manual
CPS3-12	1/3	115	1	4	20'	Manual
CPS3-13	1/3	115	1	4	30'	Manual
CPS3-15	1/3	115	1	4	50'	Manual
CPS3A-11	1/3	115	1	4	10'	Wide-Angle Float
CPS3A-12	1/3	115	1	4	20'	Wide-Angle Float
CPS3A-13	1/3	115	1	4	30'	Wide-Angle Float
CPS3V-11	1/3	115	1	4	10'	Vertical Float
CPS3V-12	1/3	115	1	4	20'	Vertical Float
CPS3V-13	1/3	115	1	4	30'	Vertical Float

Every pump tested in water to ensure pump meets performance curve.



FEATURES/BENEFITS

PERFORMANCE

- Heads up to 20' TDH
- Flows up to 42 GPM

MOTOR

- High efficient, 115v, oil filled, permanent split capacitor motor with upper and lower ball bearings and thermal overload protection
- Constant bearing lubrication
- Maximum motor cooling
- Runs cooler and lasts longer
- Internal overload protection
- Quiet operation
- Fasteners and shaft made from rugged, corrosion resistant stainless steel

SEAL DESIGN

- Mechanical with secondary dynamic lip seal
- Provides added leakage protection

IMPELLER DESIGN

- Non-clog style vortex impeller
- Designed to help reduce clogging by foreign material

POWER CORD

- Sealed entry quick disconnect power cords
- Prevents water from entering the motor housing through a cut cord
- Available in lengths up to 100'

SWITCH

- Integrated quick disconnect switch design (Vertical float series)
- Switch can be replaced without having to replace the pump

PIGGY-BACK SWITCH DESIGN

- Defective switches can be diagnosed over the phone
- Pump can be operated manually or supplied with other piggy-back switches
- Switch can be replaced without having to replace the pump

APPLICATIONS

Basements, dewatering, and septic systems



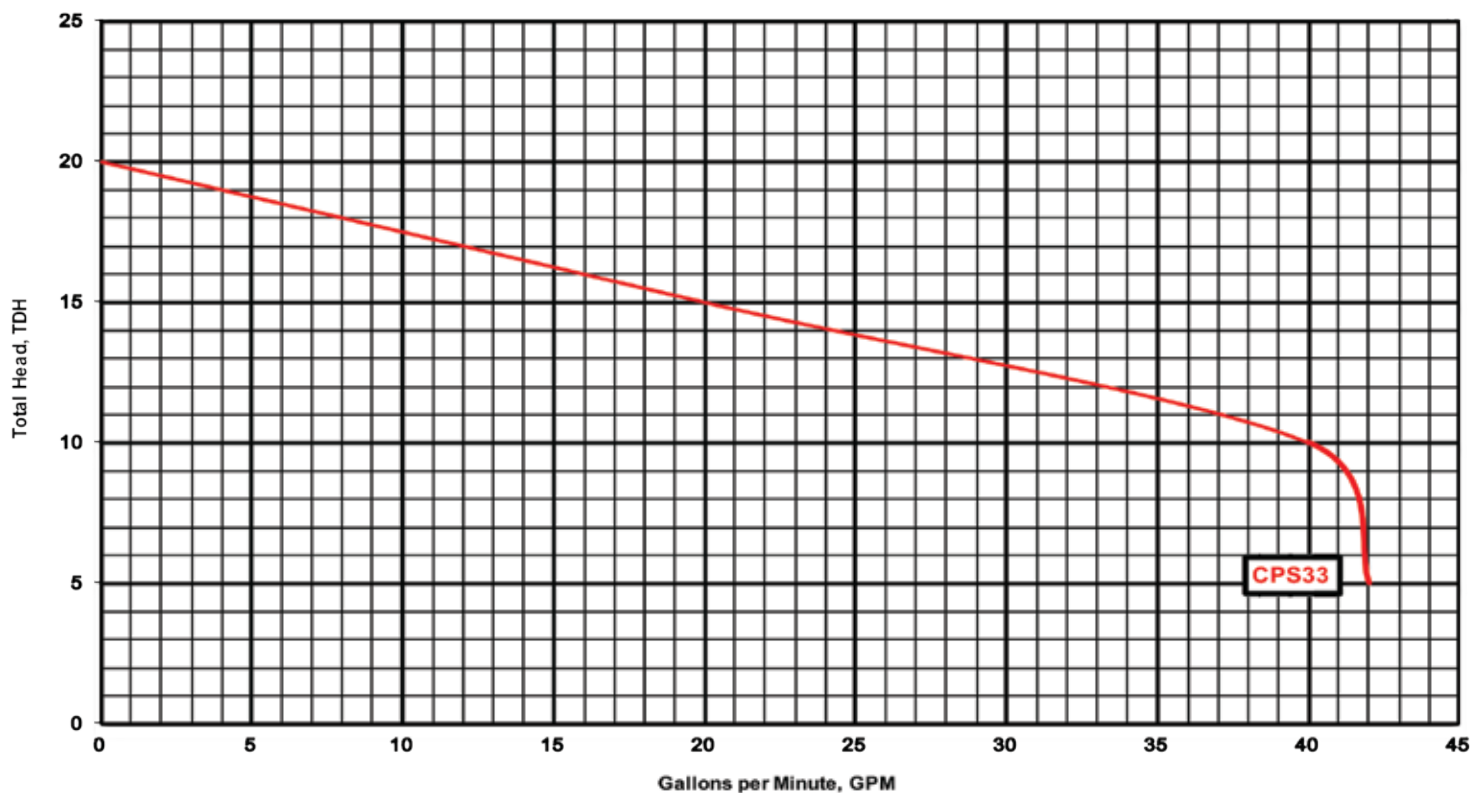
Piggy-back Wide-Angle Float



Integrated Vertical Float

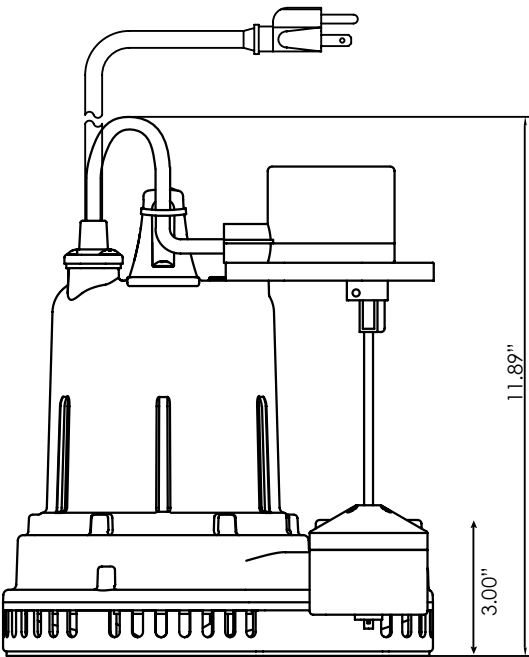
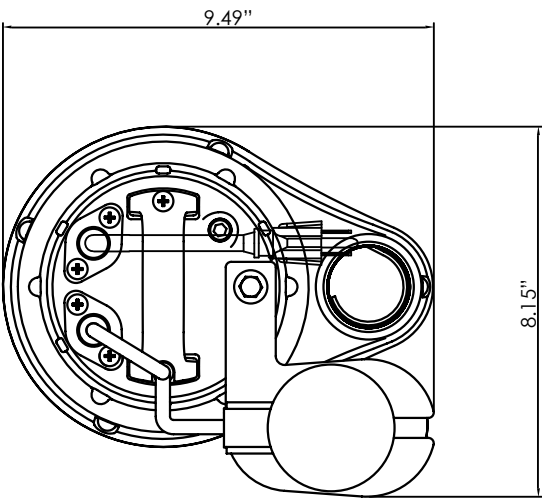
1/3 HP submersible pumps, built for reliability, that handle up to 1/4" solids and have a 1 1/2" discharge

PERFORMANCE CURVE



TECHNICAL DATA

DISCHARGE	1-1/2" NPT. vertical standard
SOLIDS HANDLING	1/4"
LIQUID TEMPERATURE	140 Degrees F. (Intermittent)
MOTOR HOUSING	Cast Iron
VOLUTE	Cast Iron
SEAL PLATE	Cast Iron
IMPELLER	Engineered glass filled thermoplastic/ Vortex
SHAFT	Nickel plated steel
SHAFT SEAL (SINGLE SEAL)	Mechanical with secondary dynamic lip seal, carbon rotating face, ceramic stationary face, Buna-N elastomer, 300 series stainless steel hardware
BEARINGS (UPPER & LOWER)	Single row, ball, oil lubricated
HARDWARE	300 Series stainless steel
O-RINGS	Buna-N
CORD	10' Length standard. Up to 100' available. (UL/CUL) Listed 16 AWG, Type SJTW
MOTOR (SINGLE PHASE)	1/3 HP 1750 RPM, 60 Hz, NEMA L Includes overload protection in the motor, oil filled, class B permanent split capacitor
WEIGHT	23 lbs. (Manual)



MODEL(S) INFORMATION

MODEL	HP	VOLTS	PHASE	AMPS	CORD LENGTH	SWITCH
CPS33-11	1/3	115	1	4	10'	Manual
CPS33-12	1/3	115	1	4	20'	Manual
CPS33-13	1/3	115	1	4	30'	Manual
CPS33-15	1/3	115	1	4	50'	Manual
CPS33A-11P	1/3	115	1	4	10'	Wide-Angle Float
CPS33A-12P	1/3	115	1	4	20'	Wide-Angle Float
CPS33A-13P	1/3	115	1	4	30'	Wide-Angle Float
CPS33V-11	1/3	115	1	4	10'	Vertical Float
CPS33V-12	1/3	115	1	4	20'	Vertical Float
CPS33V-13	1/3	115	1	4	30'	Vertical Float

Every pump tested in water to ensure pump meets performance curve.



FEATURES/BENEFITS

PERFORMANCE

Heads up to 28' TDH
Flows up to 85 GPM

MOTOR

High efficient, 115v or 230v, oil filled, permanent split capacitor motor with upper and lower ball bearings and thermal overload protection

- Constant bearing lubrication
- Maximum motor cooling
- Runs cooler and lasts longer
- Internal overload protection
- Quiet operation
- Fasteners and shaft made from rugged, corrosion resistant stainless steel

SEAL DESIGN

Type 21 inboard seal design with secondary exclusion seal

- Rotating components of seal are in the motor housing, being lubricated by the motor oil preventing foreign matter from wrapping around the seal components
- Seal will last longer if the pump runs dry
- Secondary exclusion seal keeps debris from entering the seal cavity

IMPELLER DESIGN

Non-clog style, cast-iron vortex impeller

- Designed to help reduce clogging by foreign material

POWER CORD

Sealed entry quick disconnect power cords

- Prevents water from entering the motor housing through a cut cord
- Easy to replace in the field
- Available in lengths up to 100'

SWITCH

Piggy-back switch design

- Defective switches can be diagnosed over the phone
- Pump can be operated manually or supplied with other piggy-back switches
- Switch can be replaced without having to replace the pump

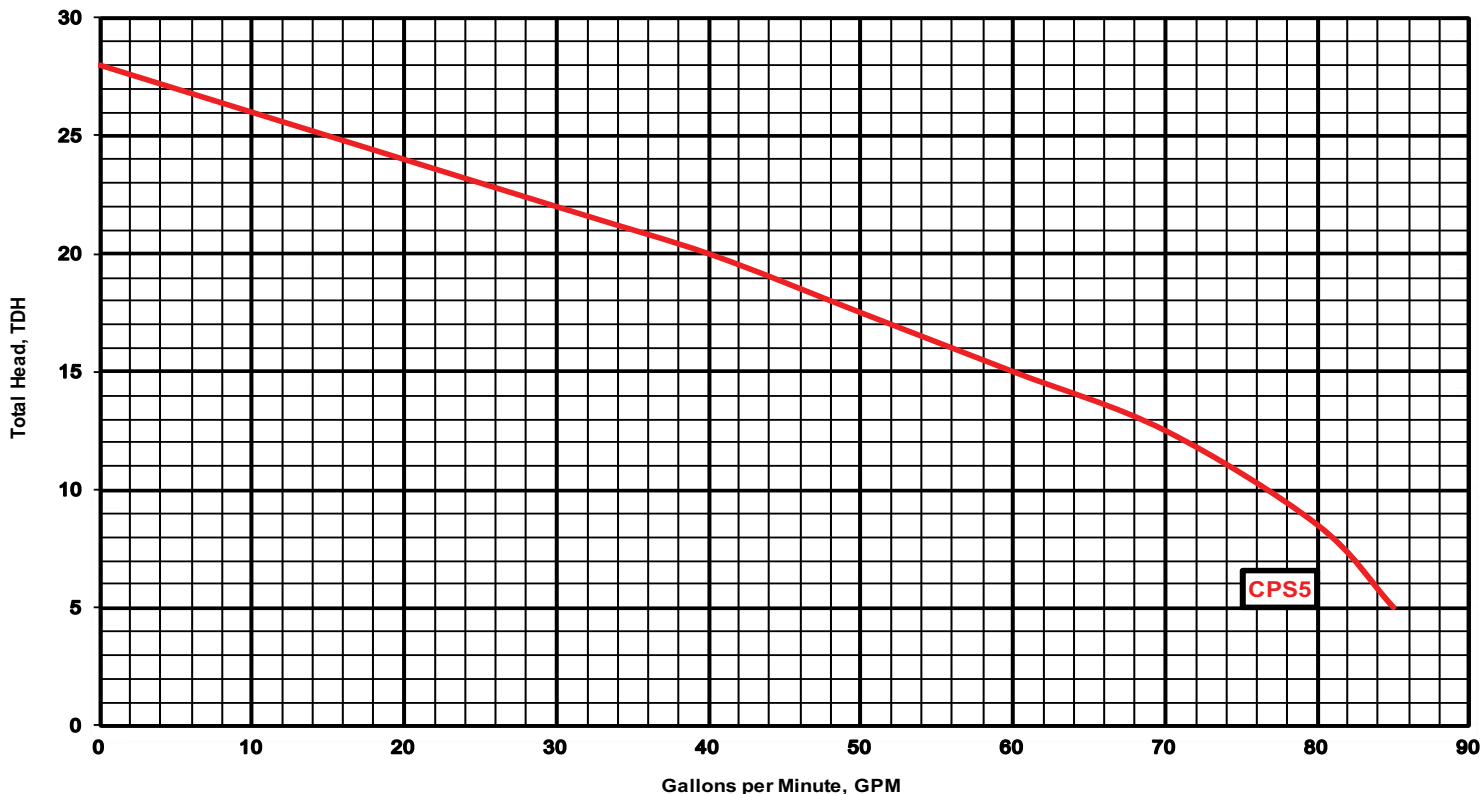
APPLICATIONS

Basements, dewatering, septic systems and truck docks



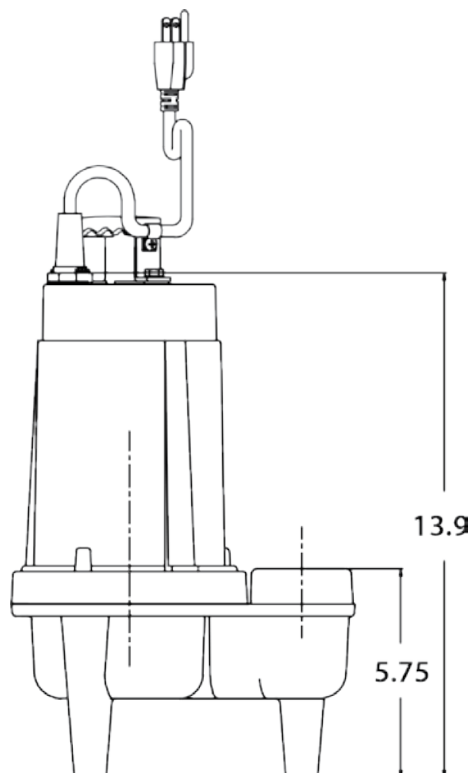
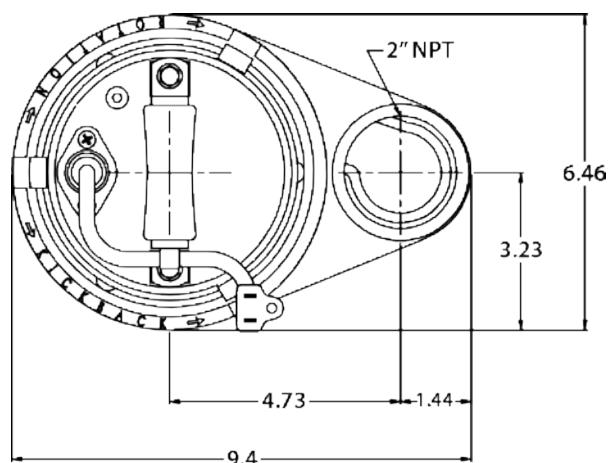
1/2 HP submersible pumps that handle up to 1 1/4" solids with 2" discharge

PERFORMANCE CURVE



TECHNICAL DATA

DISCHARGE	2" NPT. vertical standard
SOLIDS HANDLING	1 1/4"
LIQUID TEMPERATURE	140 Degrees F. (Intermittent)
MOTOR HOUSING	Cast Iron
VOLUTE	Cast Iron
SEAL PLATE	Cast Iron
IMPELLER	Cast Iron / Vortex
SOLIDS HANDLING	1 1/4"
SHAFT	Stainless Steel
SHAFT SEAL (SINGLE SEAL)	Inboard mechanical with secondary exclusion V-Seal, carbon rotating face, ceramic stationary face, Buna-N elastomer, 300 series stainless steel hardware
BEARINGS (UPPER & LOWER)	Single row, ball, oil lubricated
HARDWARE	300 Series stainless steel
O-RINGS	Buna-N
CORD	10' Length standard. Up to 100' available. (UL/CUL) Listed 16 AWG, Type SJTW
MOTOR (SINGLE PHASE)	1/2 HP 3450 RPM, 60 Hz, NEMA L Includes overload protection in the motor, oil filled, class B permanent split capacitor
WEIGHT	39 lbs. (Manual)



MODEL(S) INFORMATION

MODEL	HP	VOLTS	PHASE	AMPS	CORD LENGTH	SWITCH
CPS5-11	1/2	115	1	8	10'	Manual
CPS5-12	1/2	115	1	8	20'	Manual
CPS5-13	1/2	115	1	8	30'	Manual
CPS5-15	1/2	115	1	8	50'	Manual
CPS5A-11	1/2	115	1	8	10'	Wide-Angle Float
CPS5A-12	1/2	115	1	8	20'	Wide-Angle Float
CPS5A-13	1/2	115	1	8	30'	Wide-Angle Float
CPS5A-15	1/2	115	1	8	50'	Wide-Angle Float
CPS5V-11	1/2	115	1	8	10'	Vertical Float
CPS5V-12	1/2	115	1	8	20'	Vertical Float
CPS5V-13	1/2	115	1	8	30'	Vertical Float
CPS5V-15	1/2	115	1	8	50'	Vertical Float
CPS5-22	1/2	230	1	4	20'	Manual
CPS5A-22	1/2	230	1	4	20'	Wide-Angle Float
CPS5V-22	1/2	230	1	4	20'	Vertical Float

Every pump tested in water to ensure pump meets performance curve.



FEATURES/BENEFITS

PERFORMANCE

- Heads up to 65' TDH
- Flows up to 86 GPM

MOTOR

- High efficient, 115v or 230v, oil filled, permanent split capacitor motor with upper and lower ball bearings and thermal overload protection
- Constant bearing lubrication
- Maximum motor cooling
- Runs cooler and lasts longer
- Internal overload protection
- Quiet operation
- Fasteners and shaft made from rugged, corrosion resistant stainless steel

SEAL DESIGN

- Type 21 inboard seal design with secondary exclusion seal
- Rotating components of seal are in the motor housing, being lubricated by the motor oil preventing foreign matter from wrapping around the seal components
- Seal will last longer if the pump runs dry
- Secondary exclusion seal keeps debris from entering the seal cavity

IMPELLER DESIGN

- Non-clog style, cast-iron vortex impeller (CPEH Thermoplastic Vortex)
- Designed to help reduce clogging by foreign material

POWER CORD

- Sealed entry quick disconnect power cords
- Prevents water from entering the motor housing through a cut cord
- Easy to replace in the field
- Available in lengths up to 100'

SWITCH

- Piggy-back switch design
- Defective switches can be diagnosed over the phone
- Pump can be operated manually or supplied with other piggy-back switches
- Switch can be replaced without having to replace the pump

APPLICATIONS

Dewatering, septic systems, residential and commercial developments, elevator pits and STEP systems

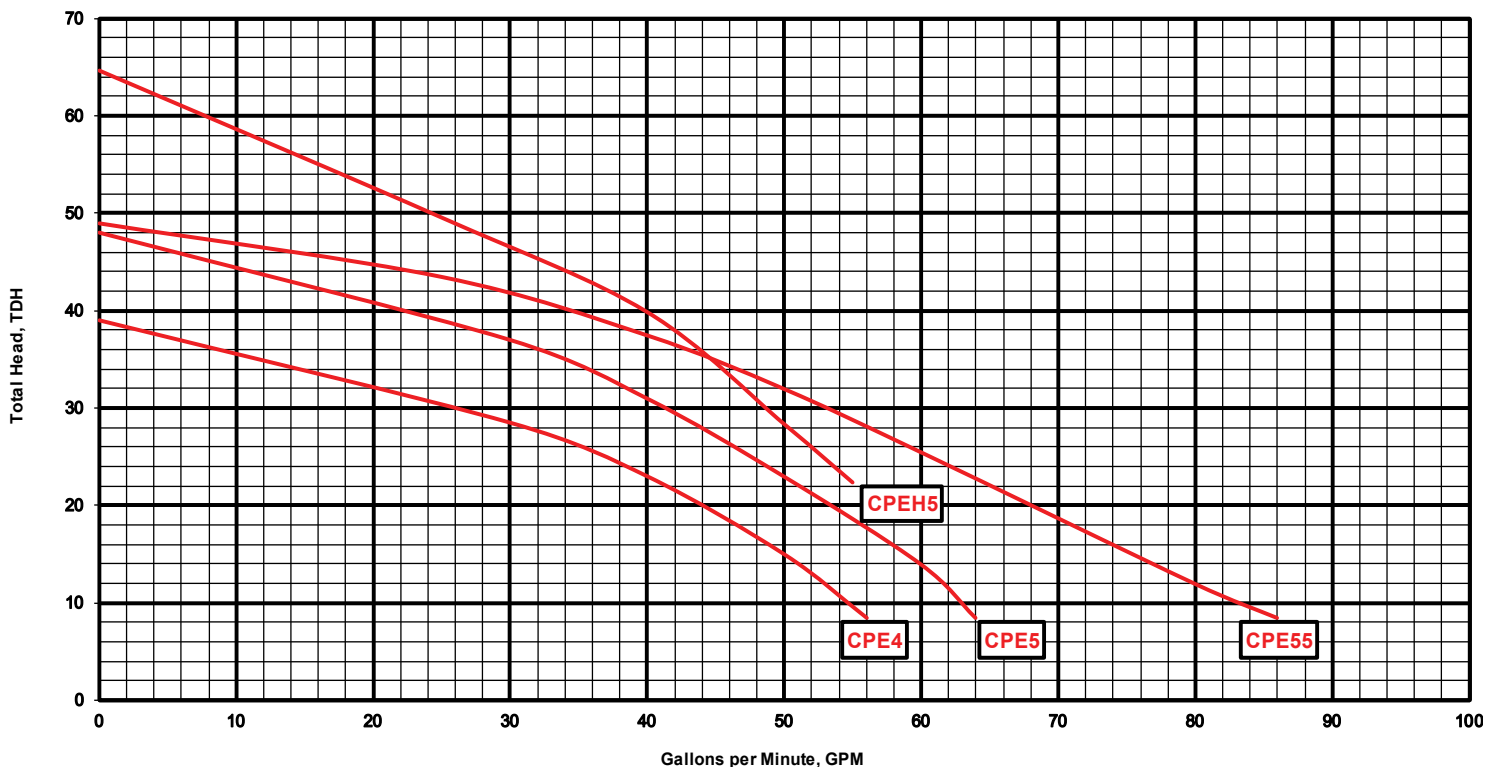


Vertical Float

Wide-Angle Float

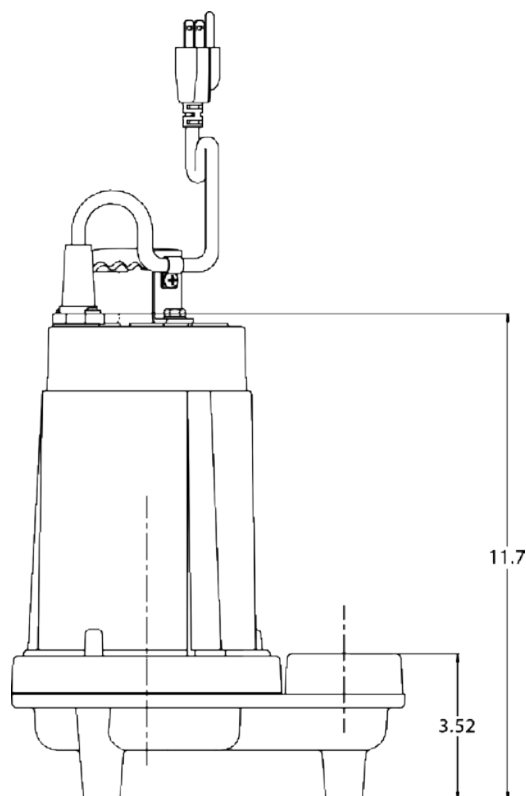
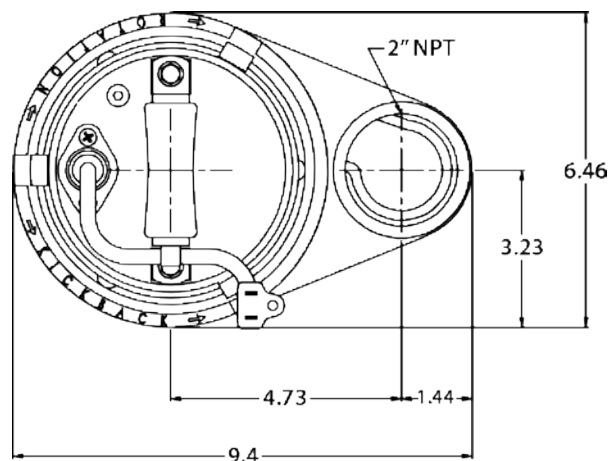
4/10-1/2 HP submersible pumps that handle up to 3/4" solids with 2" discharge

PERFORMANCE CURVE



TECHNICAL DATA

DISCHARGE	2" NPT. vertical standard
LIQUID TEMPERATURE	140 Degrees F. (Intermittent)
MOTOR HOUSING	Cast Iron
VOLUTE	Cast Iron
SEAL PLATE	Cast Iron
IMPELLER	Cast Iron / Vortex (CPEH thermoplastic vortex)
SOLIDS HANDLING	3/4"
SHAFT	Stainless Steel
SHAFT SEAL (SINGLE SEAL)	Inboard mechanical with secondary exclusion V-Seal, carbon rotating face, ceramic stationary face, Buna-N elastomer, 300 series stainless steel hardware
BEARINGS (UPPER & LOWER)	Single row, ball, oil lubricated
HARDWARE	300 Series stainless steel
O-RINGS	Buna-N
CORD	20' Length standard. Up to 100' available. (UL/CUL) Listed 16 AWG, Type SJTW
MOTOR (SINGLE PHASE)	4/10-1/2 HP 3450 RPM, 60 Hz, NEMA L Includes Overload Protection in the motor, oil filled, class B permanent split capacitor
WEIGHT	37 lbs. (Manual)



MODEL(S) INFORMATION

MODEL	HP	VOLTS	PHASE	AMPS	CORD LENGTH	SWITCH
CPE4-12 / CPE5-12 / CPE55-12 / CPEH5-12	4/10 - 1/2	115	1	6.6 / 8.5 / 10.5 / 11.5	20'	Manual
CPE4-13 / CPE5-13 / CPE55-13 / CPEH5-13	4/10 - 1/2	115	1	6.6 / 8.5 / 10.5 / 11.5	30'	Manual
CPE4-15 / CPE5-15 / CPE55-15 / CPEH5-15	4/10 - 1/2	115	1	6.6 / 8.5 / 10.5 / 11.5	50'	Manual
CPE4A-12 / CPE5A-12 / CPE55A-12 / CPEH5A-12	4/10 - 1/2	115	1	6.6 / 8.5 / 10.5 / 11.5	20'	Wide-Angle Float
CPE4A-13 / CPE5A-13 / CPE55A-13 / CPEH5A-13	4/10 - 1/2	115	1	6.6 / 8.5 / 10.5 / 11.5	30'	Wide-Angle Float
CPE4V-12 / CPE5V-12 / CPE55V-12 / CPEH5V-12	4/10 - 1/2	115	1	6.6 / 8.5 / 10.5 / 11.5	20'	Vertical Float
CPE4V-13 / CPE5V-13 / CPE55V-13 / CPEH5V-13	4/10 - 1/2	115	1	6.6 / 8.5 / 10.5 / 11.5	30'	Vertical Float
CPE4-22 / CPE5-22 / CPE55-22 / CPEH5-22	4/10 - 1/2	230	1	3.3 / 4.3 / 5.75 / 5.75	20'	Manual
CPE4A-22 / CPE5A-22 / CPE55A-22 / CPEH5A-22	4/10 - 1/2	230	1	3.3 / 4.3 / 5.75 / 5.75	20'	Wide-Angle Float
CPE4V-22 / CPE5V-22 / CPE55V-22 / CPEH5V-22	4/10 - 1/2	230	1	3.3 / 4.3 / 5.75 / 5.75	20'	Vertical Float

Every pump tested in water to ensure pump meets performance curve.



FEATURES/BENEFITS

PERFORMANCE

Heads up to 37' TDH
Flows up to 72 GPM

MOTOR

High efficient, 115v, oil filled, permanent split capacitor motor with upper and lower ball bearings and thermal overload protection

- Constant bearing lubrication
- Maximum motor cooling
- Runs cooler and lasts longer
- Internal overload protection
- Quiet operation
- Fasteners and shaft made from rugged, corrosion resistant stainless steel

SEAL DESIGN

Mechanical with secondary dynamic lip seal

- Provides added leakage protection

IMPELLER DESIGN

Non-clog style vortex impeller

- Designed to help reduce clogging by foreign material

POWER CORD

Sealed entry quick disconnect power cords

- Prevents water from entering the motor housing through a cut cord
- Easy to replace in the field
- Available in lengths up to 100'

SWITCH

Piggy-back switch design

- Defective switches can be diagnosed over the phone
- Pump can be operated manually or supplied with other piggy-back switches
- Switch can be replaced without having to replace the pump

APPLICATIONS

Basements, dewatering, septic systems, residential and commercial developments and elevator pits



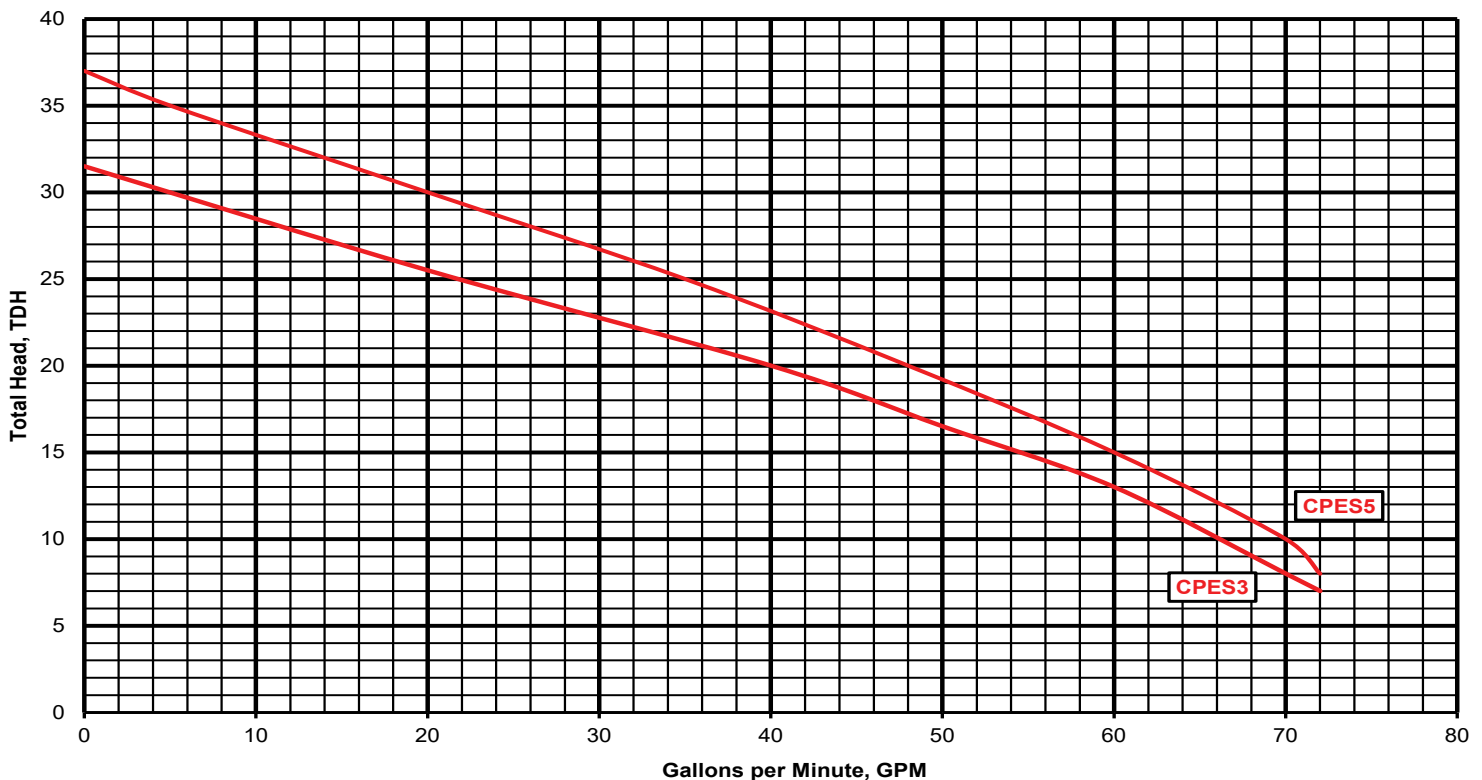
Wide-Angle Float



Vertical Float

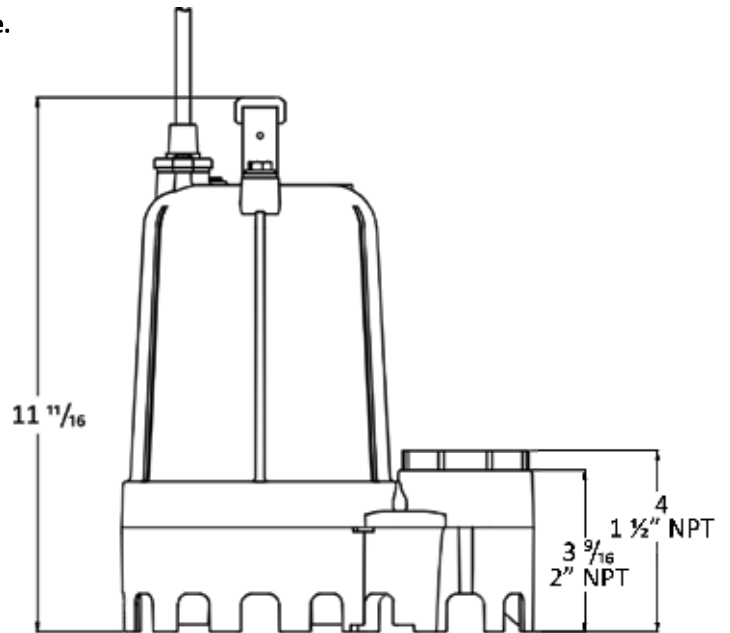
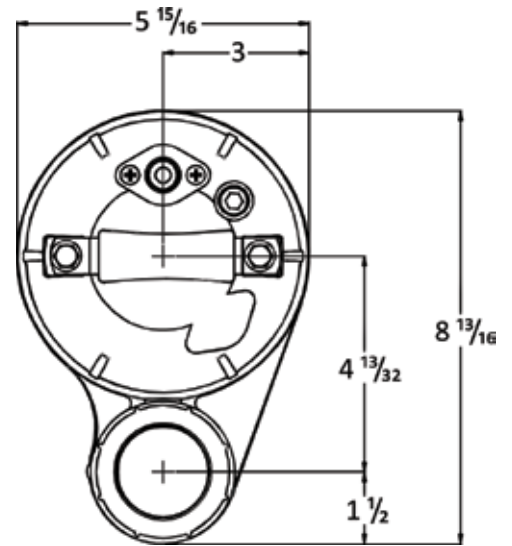
1/3-1/2 HP submersible pumps that handle up to 3/4" solids with 2" discharge with 1 1/2" adapter

PERFORMANCE CURVE



TECHNICAL DATA

DISCHARGE	2" NPT. with 1-1/2" adapter included
SOLIDS HANDLING	3/4"
LIQUID TEMPERATURE	140 Degrees F. (Intermittent)
MOTOR HOUSING	Cast Iron
VOLUTE	Engineered glass filled thermoplastic
SEAL PLATE	Cast Iron
IMPELLER	Engineered glass filled thermoplastic/ Vortex
SHAFT	Stainless Steel
SHAFT SEAL (SINGLE SEAL)	Mechanical with secondary dynamic lip seal, carbon rotating face, ceramic stationary face, Buna-N elastomer, 300 series stainless steel hardware
BEARINGS (UPPER & LOWER)	Single row, ball, oil lubricated
HARDWARE	300 Series stainless steel
O-RINGS	Buna-N
CORD	10' Length standard. Up to 100' available. (UL/CUL) Listed 16 AWG, Type SJTW
MOTOR (SINGLE PHASE)	1/3-1/2 HP 3450 RPM, 60 Hz, NEMA L Includes overload protection in the motor, oil filled, class B permanent split capacitor
WEIGHT	25 lbs. (Manual)



MODEL	HP	VOLTS	PHASE	AMPS	CORD LENGTH	SWITCH
CPES3-11 / CPES5-11	1/3-1/2	115	1	7.9 / 8.9	10'	Manual
CPES3-12 / CPES5-12	1/3-1/2	115	1	7.9 / 8.9	20'	Manual
CPES3-13 / CPES5-13	1/3-1/2	115	1	7.9 / 8.9	30'	Manual
CPES3-15 / CPES5-15	1/3-1/2	115	1	7.9 / 8.9	50'	Manual
CPES3A-11 / CPES5A-11	1/3-1/2	115	1	7.9 / 8.9	10'	Wide-Angle Float
CPES3A-12 / CPES5A-12	1/3-1/2	115	1	7.9 / 8.9	20'	Wide-Angle Float
CPES3A-13 / CPES5A-13	1/3-1/2	115	1	7.9 / 8.9	30'	Wide-Angle Float
CPES3V-11 / CPES5V-11	1/3-1/2	115	1	7.9 / 8.9	10'	Vertical Float
CPES3V-12 / CPES5V-12	1/3-1/2	115	1	7.9 / 8.9	20'	Vertical Float
CPES3V-13 / CPES5V-13	1/3-1/2	115	1	7.9 / 8.9	30'	Vertical Float

Every pump tested in water to ensure pump meets performance curve.



FEATURES/BENEFITS

PERFORMANCE

Heads up to 124' TDH
Flows up to 122 GPM

MOTOR (Single Phase)

High efficient, 115v or 230v, oil filled, permanent split capacitor motor with upper and lower ball bearings and thermal overload protection

- Constant bearing lubrication
- Maximum motor cooling
- Runs cooler and lasts longer
- Internal overload protection
- Quiet operation

- Fasteners and shaft made from rugged, corrosion resistant stainless steel

MOTOR (3 Phase)

230v or 460v, requires control panel

SEAL DESIGN

Single, mechanical, oil filled chamber

- Optional double seal series models available that provides additional protection and moisture sensing capabilities
- Optional seal failure feature that will alert you when the seal has failed

IMPELLER DESIGN

1 or 2 vane cast iron impeller

- Designed to help reduce clogging by foreign material

POWER CORD

Sealed entry quick disconnect power cords

- Prevents water from entering the motor housing through a cut cord
- Easy to replace in the field
- Available in lengths up to 100'

SWITCH

Piggy-back switch design (Single Phase)

- Defective switches can be diagnosed over the phone
- Pump can be operated manually or supplied with other piggy-back switches
- Switch can be replaced without having to replace the pump

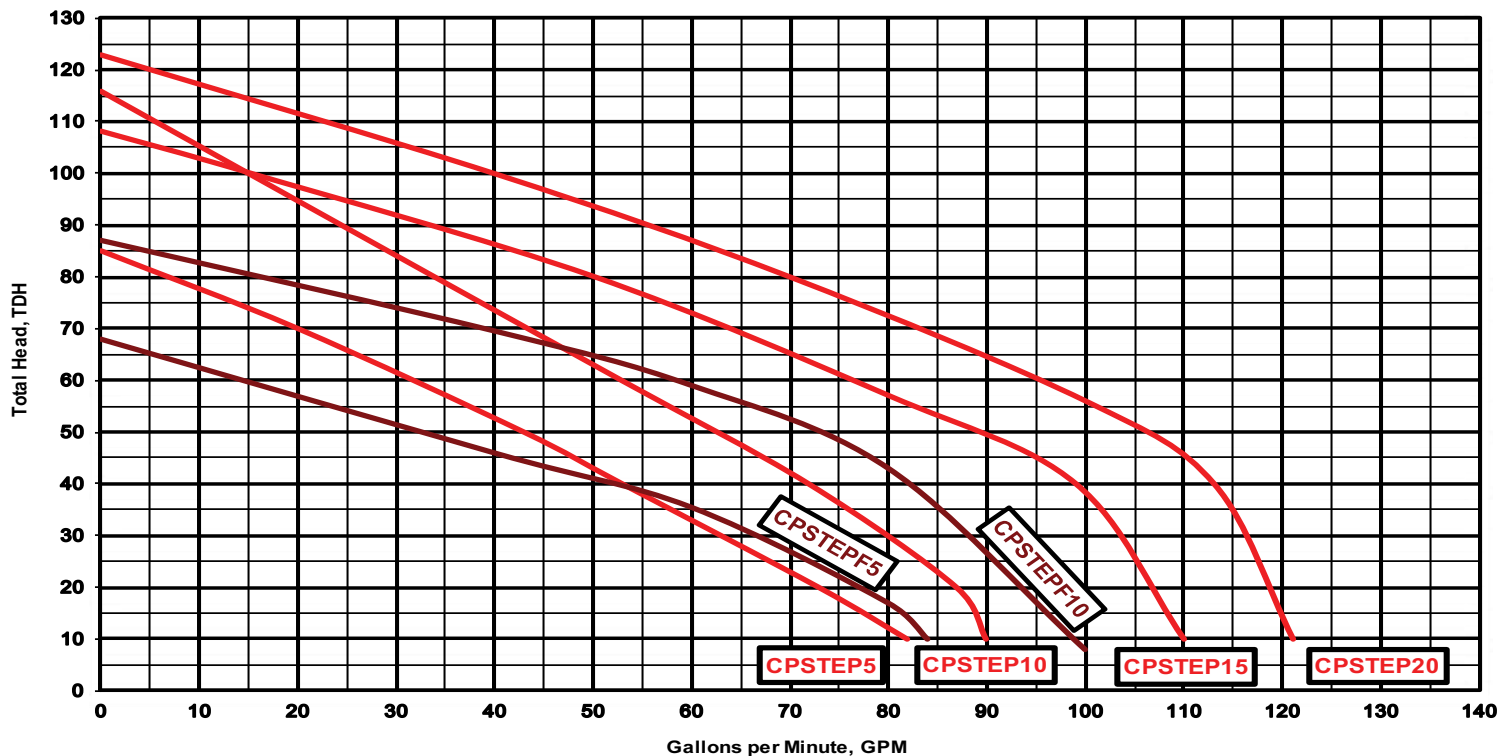
APPLICATIONS

Dewatering, septic systems, residential and commercial developments, elevator pits and STEP systems



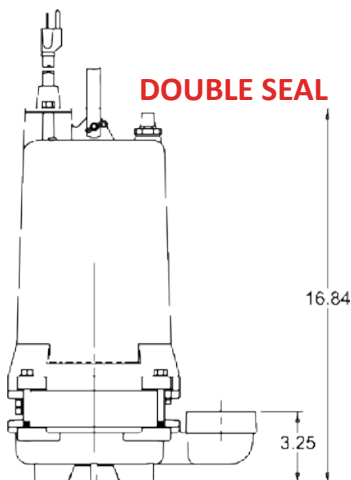
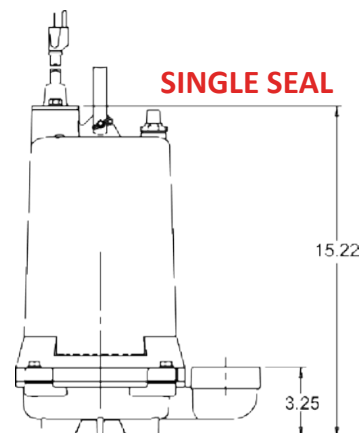
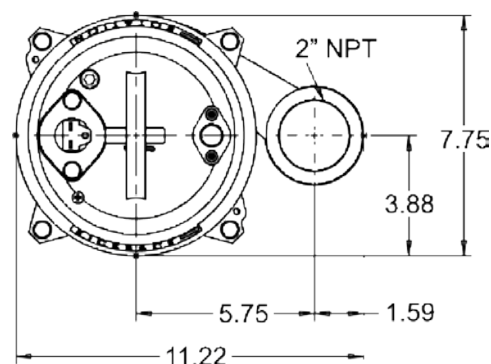
1/2-2 HP high head effluent pumps that handle up to 3/4" solids with 2" discharge

PERFORMANCE CURVE



TECHNICAL DATA

DISCHARGE	2" NPT. vertical standard
SOLIDS HANDLING	3/4"
LIQUID TEMPERATURE	140 Degrees F. (Intermittent)
MOTOR HOUSING	Cast Iron
VOLUTE	Cast Iron
SEAL PLATE	Cast Iron
IMPELLER	Cast Iron / 1 or 2 Vane
SHAFT	Stainless Steel
SHAFT SEAL (SINGLE SEAL)	Single mechanical, carbon rotating face, ceramic stationary face, Buna-N elastomer, 300 series stainless steel hardware
SHAFT SEAL (DOUBLE SEAL)	Tandem double mechanical upper & lower, carbon ceramic, Buna-N elastomer, 300 stainless steel hardware
BEARINGS (UPPER & LOWER)	Single row, ball, oil lubricated
HARDWARE	300 Series stainless steel
O-RINGS	Buna-N
CORD	Quick disconnect 20' cord standard. Up to 30' with a plug and 100' available without a plug. 3 Phase 30' cord standard UL/CSA (SJOW) 14/3 (.375 OD) * UL/CSA (SO) Cord 14 Ga. (.60)
MOTOR (SINGLE PHASE)	1/2-2 HP 3450 RPM. 60 Hz, Includes overload protection in the motor, oil filled, class F permanent split capacitor
MOTOR (THREE PHASE)	1/2-2 HP 3450 RPM. 60 Hz, oil filled, requires overload protection to be included in control panel
WEIGHT	72 lbs. (Manual)



MODEL(S) INFORMATION

MODEL	HP	VOLTS	PHASE	AMPS	CORD LENGTH	SWITCH	REQUIRES PANEL
CPSTEP512(A)	1/2	115	1	13.8	20'	M (Wide-Angle Float)	No
CPSTEP522(A)	1/2	230	1	6.9	20'	M (Wide-Angle Float)	No
CPSTEP533	1/2	230	3	4.6	30'	Manual	Yes
CPSTEP1022(A)	1	208/230	1	11.5/10.4	20'	M (Wide-Angle Float)	No
CPSTEP1033	1	208/230	3	8.4/7.6	30'	Manual	Yes
*CPSTEP1043	1	460	3	3.8	30'	Manual	Yes
CPSTEPF512(A)	1/2	115	1	13.8	20'	M (Wide-Angle Float)	No
CPSTEPF522(A)	1/2	230	1	6.9	20'	M (Wide-Angle Float)	No
CPSTEPF533	1/2	230	3	4.6	30'	Manual	Yes
CPSTEPF1022(A)	1	208/230	1	11.5/10.4	20'	M (Wide-Angle Float)	No
CPSTEPF1033	1	208/230	3	8.4/7.6	30'	Manual	Yes
*CPSTEPF1043	1	460	3	3.8	30'	Manual	Yes
CPSTEPF1522(A)	1-1/2	208/230	1	13.3/12	20'	M (Wide-Angle Float)	No
CPSTEPF1533	1-1/2	208/230	3	9.3/8.4	30'	Manual	Yes
*CPSTEPF1543	1-1/2	460	3	4.2	30'	Manual	Yes
CPSTEP2022(A)	2	208/230	1	16.4/14.8	20'	M (Wide-Angle Float)	No
CPSTEP2033	2	208/230	3	12.2/11	30'	Manual	Yes
*CPSTEP2043	2	460	3	5.5	30'	Manual	Yes

Every pump tested in water to ensure pump meets performance curve.

FEATURES/BENEFITS

PERFORMANCE

- Heads up to 23' TDH
- Flows up to 90 GPM

MOTOR

- High efficient, 115v, oil filled, permanent split capacitor motor with upper and lower ball bearings and thermal overload protection
- Constant bearing lubrication
- Maximum motor cooling
- Runs cooler and lasts longer
- Internal overload protection
- Quiet operation
- Fasteners and shaft made from rugged, corrosion resistant stainless steel

SEAL DESIGN

- Mechanical with secondary dynamic lip seal
- Provides added leakage protection

IMPELLER DESIGN

- Non-clog style vortex impeller
- Designed to help reduce clogging by foreign material

POWER CORD

- Sealed entry quick disconnect power cords
- Prevents water from entering the motor housing through a cut cord
- Easy to replace in the field
- Available in lengths up to 100'

SWITCH

- Piggy-back switch design
- Defective switches can be diagnosed over the phone
- Pump can be operated manually or supplied with other piggy-back switches
- Switch can be replaced without having to replace the pump

APPLICATIONS

Basements, dewatering, septic systems, sewage lift stations, add-a-baths and truck docks



Wide-Angle Float



Vertical Float

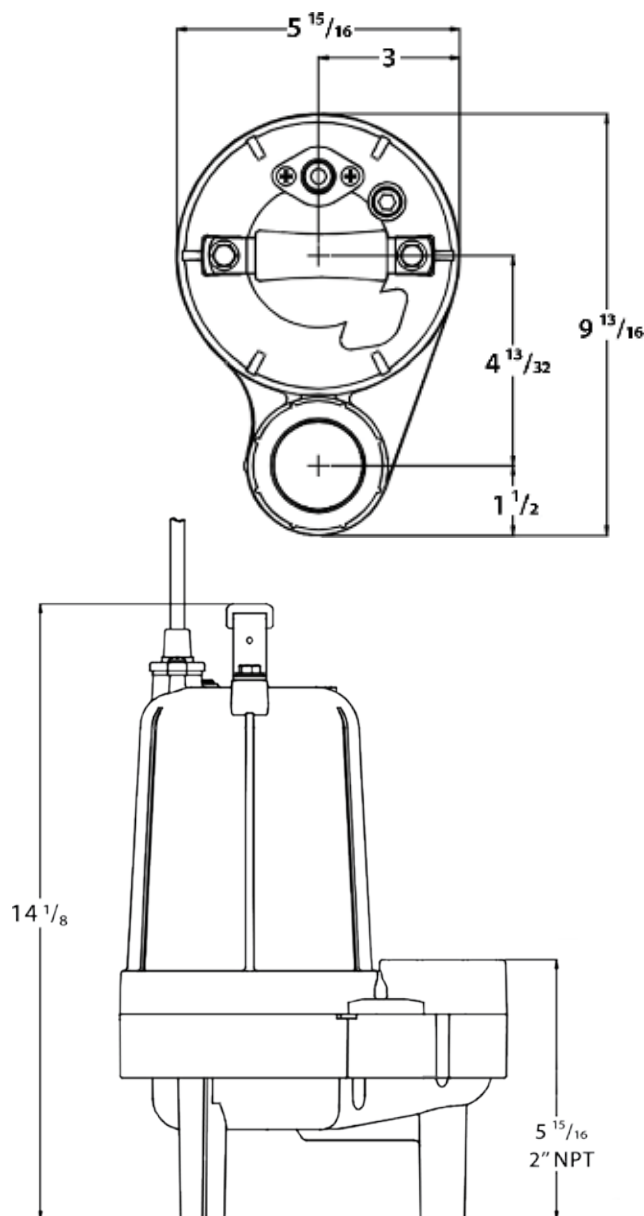
1/2 HP submersible pumps that handle up to 2" solids with 2" discharge

PERFORMANCE CURVE



TECHNICAL DATA

DISCHARGE	2" NPT. vertical standard
SOLIDS HANDLING	2"
LIQUID TEMPERATURE	140 Degrees F. (Intermittent)
MOTOR HOUSING	Cast Iron
VOLUTE	Engineered glass filled thermoplastic
SEAL PLATE	Cast Iron
IMPELLER	Engineered glass filled thermoplastic/ Vortex
SHAFT	Stainless Steel
SHAFT SEAL (SINGLE SEAL)	Mechanical with secondary dynamic lip seal, carbon rotating face, ceramic stationary face, Buna-N elastomer, 300 series stainless steel hardware
BEARINGS (UPPER & LOWER)	Single row, ball, oil lubricated
HARDWARE	300 Series stainless steel
O-RINGS	Buna-N
CORD	10' Length standard. Up to 100' available. (UL/CUL) Listed 16 AWG, Type SJTW
MOTOR (SINGLE PHASE)	1/2 HP 3450 RPM, 60 Hz, NEMA L Includes overload protection in the motor, oil filled, class B permanent split capacitor
WEIGHT	25 lbs. (Manual)



MODEL(S) INFORMATION

MODEL	HP	VOLTS	PHASE	AMPS	CORD LENGTH	SWITCH
CPEW5-11	1/2	115	1	9.5	10'	Manual
CPEW5-12	1/2	115	1	9.5	20'	Manual
CPEW5-13	1/2	115	1	9.5	30'	Manual
CPEW5-15	1/2	115	1	9.5	50'	Manual
CPEW5A-11	1/2	115	1	9.5	10'	Wide-Angle Float
CPEW5A-12	1/2	115	1	9.5	20'	Wide-Angle Float
CPEW5A-13	1/2	115	1	9.5	30'	Wide-Angle Float
CPEW5A-15	1/2	115	1	9.5	50'	Wide-Angle Float
CPEW5V-11	1/2	115	1	9.5	10'	Vertical Float
CPEW5V-12	1/2	115	1	9.5	20'	Vertical Float
CPEW5V-13	1/2	115	1	9.5	30'	Vertical Float
CPEW5V-15	1/2	115	1	9.5	50'	Vertical Float

Every pump tested in water to ensure pump meets performance curve.



FEATURES/BENEFITS

PERFORMANCE

Heads up to 34' TDH
Flows up to 109 GPM

MOTOR

High efficient, 115v or 230v, oil filled, permanent split capacitor motor with upper and lower ball bearings and thermal overload protection

- Constant bearing lubrication
- Maximum motor cooling
- Runs cooler and lasts longer
- Internal overload protection
- Quiet operation
- Fasteners and shaft made from rugged, corrosion resistant stainless steel

SEAL DESIGN

Type 21 inboard seal design with secondary exclusion seal

- Rotating components of seal are in the motor housing, being lubricated by the motor oil preventing foreign matter from wrapping around the seal components
- Seal will last longer if the pump runs dry
- Secondary exclusion seal keeps debris from entering the seal cavity

IMPELLER DESIGN

Non-clog style, cast-iron vortex impeller

- Designed to help reduce clogging by foreign material

POWER CORD

Sealed entry quick disconnect power cords

- Prevents water from entering the motor housing through a cut cord
- Easy to replace in the field
- Available in lengths up to 100'

SWITCH

Piggy-back switch design

- Defective switches can be diagnosed over the phone
- Pump can be operated manually or supplied with other piggy-back switches
- Switch can be replaced without having to replace the pump

APPLICATIONS

Basements, dewatering, septic systems, sewage lift stations, add-a-baths and truck docks

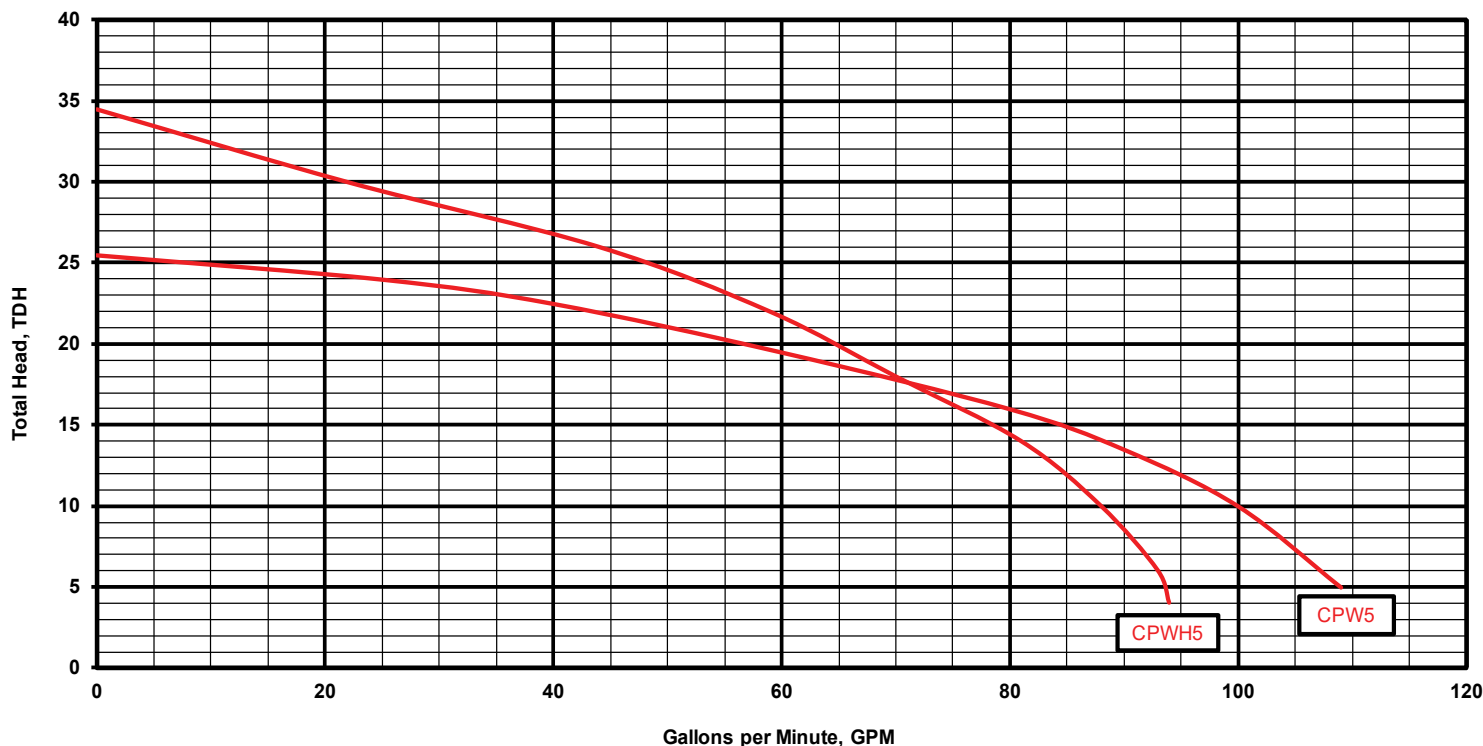


Wide-angle Float

Vertical Float

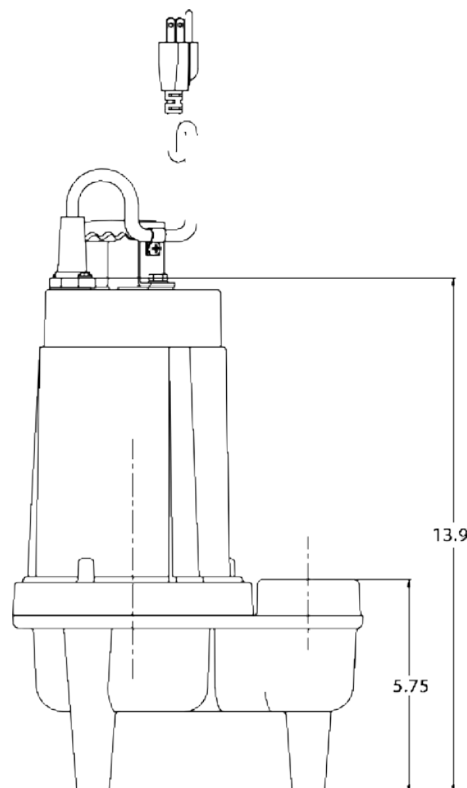
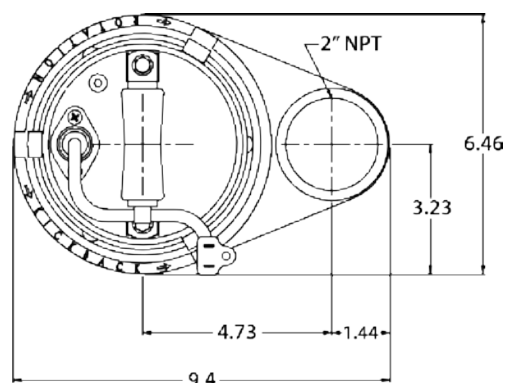
1/2 HP submersible pumps that handle up to 2" solids with 2" discharge

PERFORMANCE CURVE



TECHNICAL DATA

DISCHARGE	2" NPT. vertical standard
SOLIDS HANDLING	2" CPW, 1-1/2" CPWH
LIQUID TEMPERATURE	140 Degrees F. (Intermittent)
MOTOR HOUSING	Cast Iron
VOLUTE	Cast Iron
SEAL PLATE	Cast Iron
IMPELLER	Cast Iron / Vortex
SHAFT	Stainless Steel
SHAFT SEAL (SINGLE SEAL)	Inboard mechanical with secondary exclusion V-Seal, carbon rotating face, ceramic stationary face, Buna-N elastomer, 300 series stainless steel hardware
BEARINGS (UPPER & LOWER)	Single row, ball, oil lubricated
HARDWARE	300 Series stainless steel
O-RINGS	Buna-N
CORD	10' Length standard. Up to 100' available. (UL/CUL) Listed 16 AWG, Type SJTW
MOTOR (SINGLE PHASE)	1/2 HP 3450 RPM, 60 Hz, NEMA L Includes overload protection in the motor, oil filled, class B permanent split capacitor
WEIGHT	37 lbs. (Manual)



MODEL(S) INFORMATION

MODEL	HP	VOLTS	PHASE	AMPS	CORD LENGTH	SWITCH
CPW5-11 / CPWH5-11	1/2	115	1	11.5	10'	Manual
CPW5-12 / CPWH5-12	1/2	115	1	11.5	20'	Manual
CPW5-13 / CPWH5-13	1/2	115	1	11.5	30'	Manual
CPW5-15 / CPWH5-15	1/2	115	1	11.5	50'	Manual
CPW5A-11 / CPWH5A-11	1/2	115	1	11.5	10'	Wide-Angle Float
CPW5A-12 / CPWH5A-12	1/2	115	1	11.5	20'	Wide-Angle Float
CPW5A-13 / CPWH5A-13	1/2	115	1	11.5	30'	Wide-Angle Float
CPW5V-11 / CPWH5V-11	1/2	115	1	11.5	10'	Vertical Float
CPW5V-12 / CPWH5V-12	1/2	115	1	11.5	20'	Vertical Float
CPW5V-13 / CPWH5V-13	1/2	115	1	11.5	30'	Vertical Float
CPW5-22 / CPWH5-22	1/2	230	1	5.75	20'	Manual
CPW5A-22 / CPWH5A-22	1/2	230	1	5.75	20'	Wide-Angle Float
CPW5V-22 / CPWH5V-22	1/2	230	1	5.75	20'	Vertical Float

Every pump tested in water to ensure pump meets performance curve.



FEATURES/BENEFITS

PERFORMANCE

Heads up to 80' TDH
Flows up to 222 GPM

MOTOR (Single Phase)

High efficient, 115v or 230v, oil filled, permanent split capacitor motor with upper and lower ball bearings and thermal overload protection

- Constant bearing lubrication
- Maximum motor cooling
- Runs cooler and lasts longer
- Internal overload protection
- Quiet operation

- Fasteners and shaft made from rugged, corrosion resistant stainless steel

MOTOR (3 Phase)

230v or 460v, requires control panel

SEAL DESIGN

Single, mechanical, oil filled chamber

- Optional double series models available that provides additional protection and optional moisture sensing capabilities
- Optional seal failure feature that will alert you when the seal has failed

IMPELLER DESIGN

2 vane, cast iron impeller

- Designed to help reduce clogging by foreign material

POWER CORD

Sealed entry quick disconnect power cords

- Prevents water from entering the motor housing through a cut cord
- Easy to replace in the field
- Available in lengths up to 100'

SWITCH

Piggy-back switch design (Single Phase)

- Defective switches can be diagnosed over the phone
- Pump can be operated manually or supplied with other piggy-back switches
- Switch can be replaced without having to replace the pump

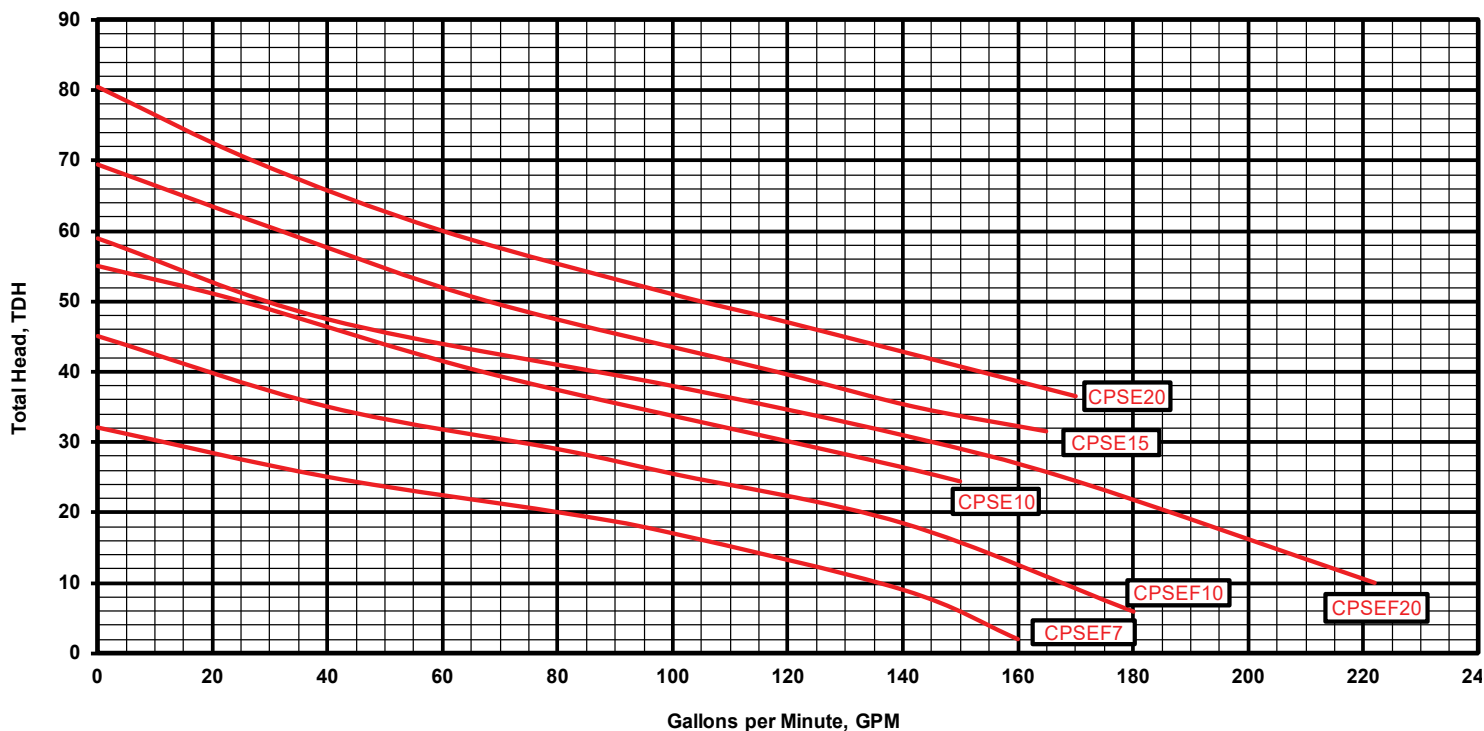
APPLICATIONS

Residential developments, commercial developments and wastewater applications



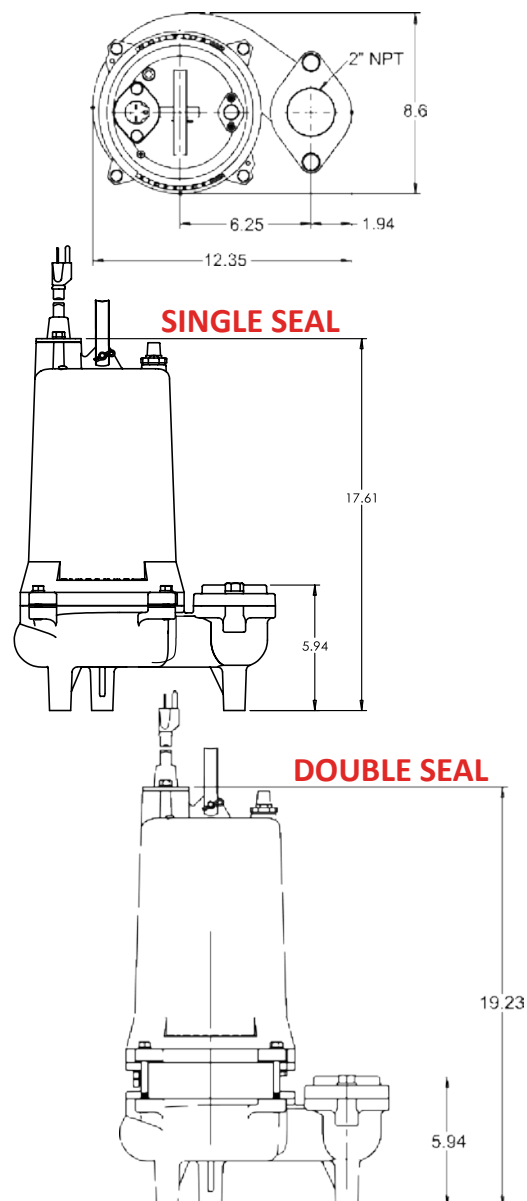
1/2-2 HP cast iron sewage pumps that handle up to 2" solids with 2" or 3" discharge

PERFORMANCE CURVE



TECHNICAL DATA

DISCHARGE	2" NPT. vertical standard, 3" optional
SOLIDS HANDLING	2"
LIQUID TEMPERATURE	140 Degrees F. (Intermittent)
MOTOR HOUSING	Cast Iron
VOLUTE	Cast Iron
SEAL PLATE	Cast Iron
IMPELLER	Cast Iron / 2 Vane
SHAFT	Stainless Steel
SHAFT SEAL (SINGLE SEAL)	Single mechanical, carbon rotating face, ceramic stationary face, Buna-N elastomer, 300 series stainless steel hardware
SHAFT SEAL (DOUBLE SEAL)	Tandem double mechanical upper & lower, carbon ceramic, Buna-N elastomer, 300 stainless steel hardware
BEARINGS (UPPER & LOWER)	Single row, ball, oil lubricated
HARDWARE	300 Series stainless steel
O-RINGS	Buna-N
CORD	Quick disconnect 20' cord standard. Up to 30' with a plug and 100' available without a plug. 3 phase 30' cord standard. UL/CSA (SJOW) 14/3 (.375 OD) * UL/CSA (SO) Cord 14 Ga. (.60)
MOTOR (SINGLE PHASE)	1/2-2 HP 3450 RPM. 60 Hz, Includes Overload Protection in the Motor. Oil Filled, Class F Permanent Split Capacitor
MOTOR (THREE PHASE)	1/2-2 HP 3450 RPM. 60 Hz, oil filled, requires overload protection to be included in control panel
WEIGHT	80 lbs. (Manual)



MODEL(S) INFORMATION

MODEL	HP	VOLTS	PHASE	AMPS	CORD LENGTH	SWITCH	REQUIRES PANEL
CPSE512(A)	1/2	115	1	14.5	20'	M (Wide-Angle Float)	No
CPSE522(A)	1/2	230	1	7.3	20'	M (Wide-Angle Float)	No
CPSE533	1/2	230	3	5.3	30'	Manual	Yes
*CPSE543	1/2	460	3	2.7	30'	Manual	Yes
CPSEF712(A)	3/4	115	1	12	20'	M (Wide-Angle Float)	No
CPSEF722(A)	3/4	230	1	6	20'	M (Wide-Angle Float)	No
CPSEF733	3/4	230	3	5	30'	Manual	Yes
*CPSEF743	3/4	460	3	2.5	30'	Manual	Yes
CPSE1022(A)	1	208/230	1	11.5/10.4	20'	M (Wide-Angle Float)	No
CPSEF1022(A)	1	208/230	1	12.2/11	20'	M (Wide-Angle Float)	No
CPSE1033	1	230	3	7.6	30'	Manual	Yes
CPSEF1033	1	230	3	8	30'	Manual	Yes
*CPSE1043	1	460	3	3.8	30'	Manual	Yes
*CPSEF1043	1	460	3	4	30'	Manual	Yes
CPSE1522(A)	1-1/2	208/230	1	14.7/13.3	20'	M (Wide-Angle Float)	No
CPSE1533	1-1/2	208/230	3	10.5/9.5	30'	Manual	Yes
*CPSE1543	1-1/2	460	3	4.8	30'	Manual	Yes
CPSE2022(A)	2	208/230	1	16.4/14.8	20'	M (Wide-Angle Float)	No
CPSEF2022(A)	2	208/230	1	16.4/14.8	20'	M (Wide-Angle Float)	No
CPSE2033	2	208/230	3	12.1/11	30'	Manual	Yes
CPSEF2033	2	208/230	3	12.1/11	30'	Manual	Yes
*CPSE2043	2	460	3	5.5	30'	Manual	Yes
*CPSEF2043	2	460	3	5.5	30'	Manual	Yes

Champion Pump CPSEV(H)

1/2 - 2HP
SEWAGE

Every pump tested in water to ensure pump meets head and flow requirements.

FEATURES/BENEFITS

PERFORMANCE

Heads up to 77' TDH
Flows up to 217 GPM

MOTOR (Single Phase)

High efficient, 115v or 230v, oil filled, permanent split capacitor motor with upper and lower ball bearings and thermal overload protection

- Constant bearing lubrication
- Maximum motor cooling
- Runs cooler and lasts longer
- Internal overload protection
- Quiet operation
- Fasteners and shaft made from rugged, corrosion resistant stainless steel

MOTOR (3 Phase)

230v or 460v, requires control panel

SEAL DESIGN

Single, mechanical, running in oil filled chamber allowing dry run and cooling

- Optional double seal models available that provides additional protection and optional moisture sensing capabilities
- Optional seal failure feature that will alert you when the seal has failed

IMPELLER DESIGN

Vortex cast iron impeller

- Designed to help reduce clogging by foreign material

POWER CORD

Sealed entry quick disconnect power cords

- Prevents water from entering the motor housing through a cut cord
- Easy to replace in the field without having to run a new power cord
- Available in lengths up to 100'

SWITCH

Piggy-back switch design (Single Phase)

- Defective switches can be diagnosed over the phone
- Pump can be operated manually or supplied with other piggy-back switches
- Switch can be replaced without having to replace the pump

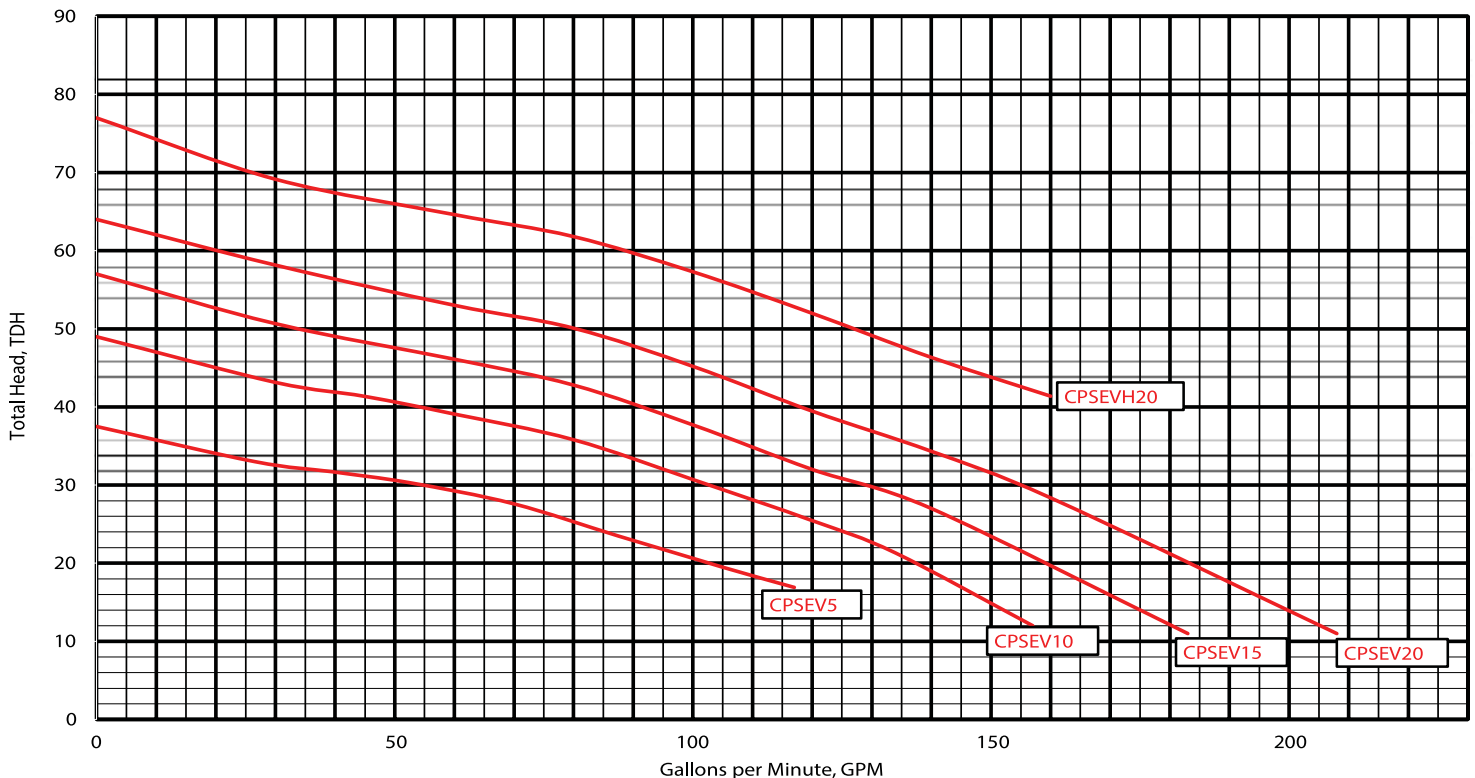
APPLICATIONS

Residential developments, commercial developments and wastewater applications



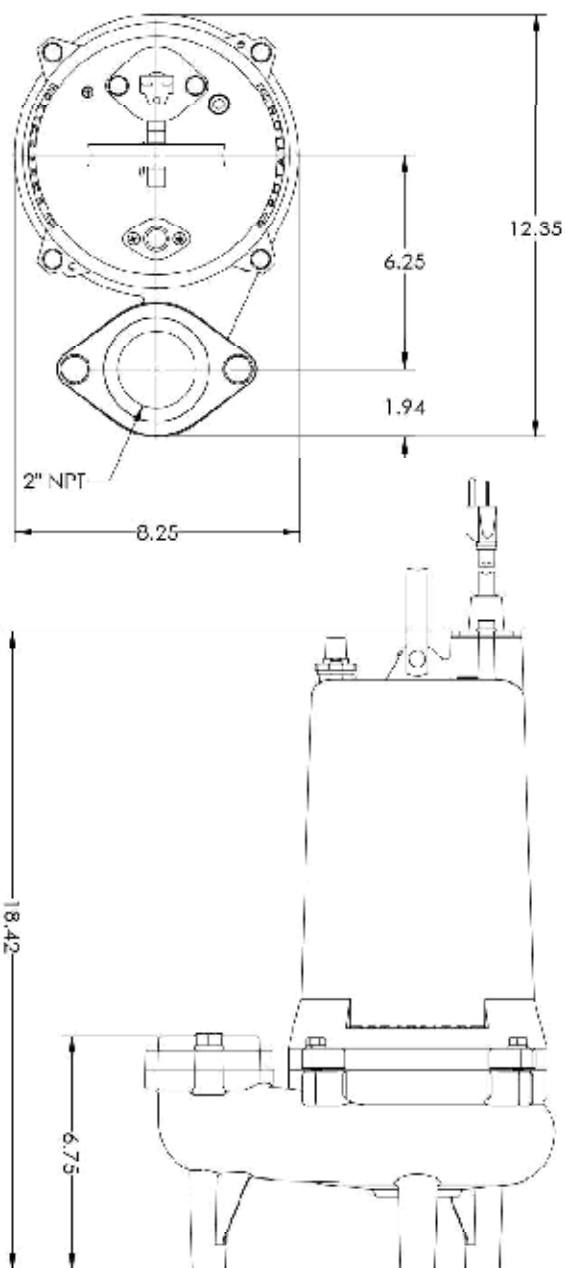
1/2 - 2 HP cast iron submersible pumps that handle up to 2" solids and have a 2" or 3" discharge

PERFORMANCE CURVE



TECHNICAL DATA

DISCHARGE	2" NPT Vertical Standard, 3" (Optional)
LIQUID TEMPERATURE	140 Degrees F. (Intermittent)
MOTOR HOUSING	Cast Iron
VOLUTE	Cast Iron
SEAL PLATE	Cast Iron
IMPELLER	Ductile Iron
SOLIDS HANDLING	2"
SHAFT	416 Stainless Steel
SEAL PLATE	Cast Iron
SHAFT SEAL (SINGLE SEAL)	Carbon - Ceramic/ Buna-N-Elastomer 300 Series Stainless Steel - Hardware
SHAFT SEAL (DOUBLE SEAL)	Tandem Double Mechanical Upper & Lower/ Carbon-Ceramic, Buna-N-Elasto- mer 300 Series Stainless Steel - Hardware
BEARINGS (UPPER & LOWER)	Single Row, Ball, Oil Lubricated
HARDWARE	300 Series Stainless Steel
O-RINGS	Buna-N
CORD	Quick disconnect 20' cord standard. Up to 30' with a plug and 100' available without a plug. 3 phase 30' cord stan- dard. UL/CSA (SJOW) 14/3 (.375 OD) * UL/CSA (SO) Cord 14 Ga. (.60)
MOTOR (SINGLE PHASE)	3450 RPM. 60 Hz Includes Overload Protection in the Motor. Oil Filled, Class F, PSC Permanent Split Capacitor
MOTOR (Three Phase)	3450 RPM. 60 Hz, Oil Filled, Requires Overload Protection to be Included in Control Panel
OPTIONAL SEAL FAILURE	20' Length Standard UL/ CSA (SJTW) 16/3 (.330 OD)



MODEL(S) INFORMATION

MODEL	HP	VOLTS	PHASE	AMPS	CORD LENGTH	SWITCH	REQUIRES PANEL
CPSEV512(A)	1/2	115	1	14.5	20'	M (Wide-Angle Float)	No
CPSEV522(A)	1/2	230	1	7.3	20'	M (Wide-Angle Float)	No
CPSEV533	1/2	230	3	5.3	30'	Manual	Yes
*CPSEV543	1/2	460	3	2.7	30'	Manual	Yes
CPSEV1022(A)	1	208/230	1	13.9/12.6	20'	M (Wide-Angle Float)	No
CPSEV1033	1	208/230	3	8.5/7.7	30'	Manual	Yes
*CPSEV1043	1	460	3	3.8	30'	Manual	Yes
CPSEV1522(A)	1-1/2	208/230	1	14.7/13.3	20'	M (Wide-Angle Float)	No
CPSEV1533	1-1/2	208/230	3	10.4/9.4	30'	Manual	Yes
*CPSEV1543	1-1/2	460	3	4.7	30'	Manual	Yes
CPSEV2022(A)	2	230	1	18	20'	M (Wide-Angle Float)	No
CPSEV2033	2	208/230	3	12.1/11	30'	Manual	Yes
*CPSEV2043	2	460	3	5.5	30'	Manual	Yes
CPSEVH2022(A)	2	230	1	18	20'	M (Wide-Angle Float)	No
CPSEVH2033	2	208/230	3	12.1/11	30'	Manual	Yes
*CPSEVH2043	2	460	3	5.5	30'	Manual	Yes

Every pump tested in water to ensure pump meets performance curve.



FEATURES/BENEFITS

PERFORMANCE

Heads up to 133' TDH
Flows up to 44 GPM

MOTOR

Internal capacitor run 115v or 208-230v, oil filled motors with upper and lower ball bearings and thermal overload protection.

- Constant bearing lubrication
- Maximum motor cooling
- Runs cooler and lasts longer
- Internal overload protection
- Quiet operation
- Fasteners and shaft made from rugged, corrosion resistant stainless steel

SEAL DESIGN

Single, mechanical, running in oil filled chamber allowing dry run and cooling

IMPELLER DESIGN

Non-clog style, cast-iron vortex impeller

- Designed to generate higher heads and reduce clogging by foreign materials
- Provides non-overloading performance

CUTTER ASSEMBLY

440 SST (56-60 Rockwell)

- 24,000 cuts per second and 1.5 million cuts a minute
- Designed to reduce over loading and clogging

POWER CORD

Sealed entry quick disconnect power cords

- Prevents water from entering the motor housing through a cut cord
- Easy to replace in the field without having to run a new power cord
- Available in lengths up to 100'

SWITCH

Piggy-back switch design

- Defective switches can be diagnosed over the phone
- Pump can be operated manually or supplied with other piggy-back switches
- Switch can be replaced

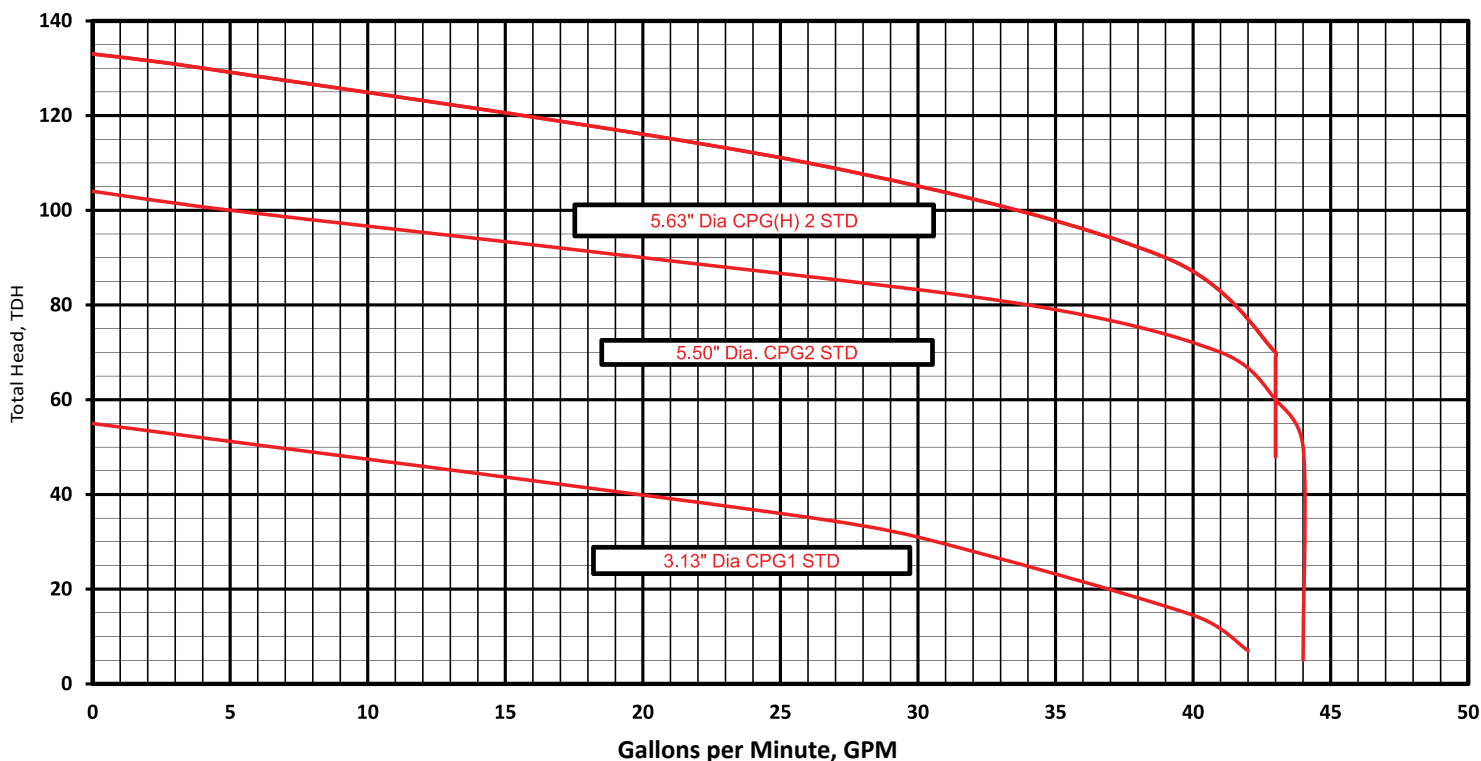
APPLICATIONS

Residential developments, commercial developments and wastewater applications



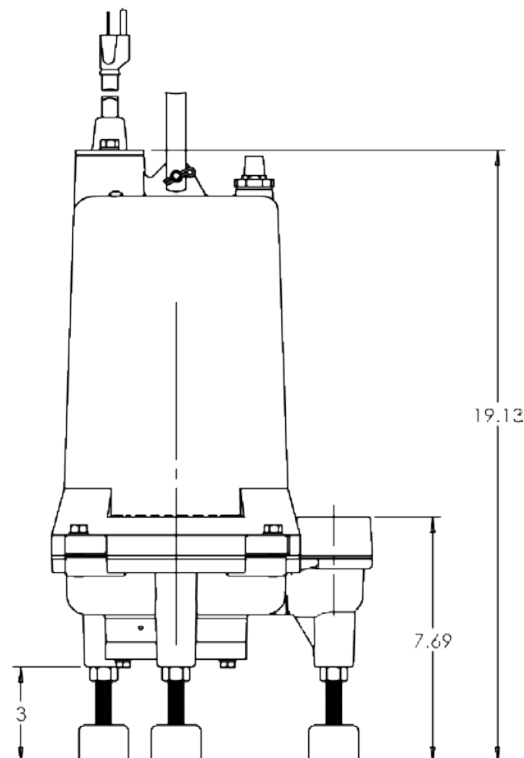
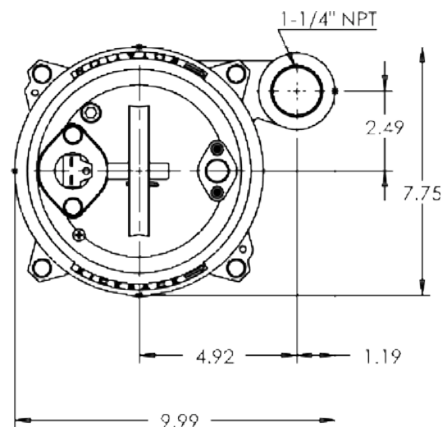
1 & 2 HP grinder pumps that have a 1 1/4" vertical discharge (optional 2" adapter available), and can grind up to 3" solids, and be installed on a rail system or with the supplied legs

PERFORMANCE CURVE



TECHNICAL DATA

DISCHARGE	1 1/4" NPT. Vertical standard or optional 2"
LIQUID TEMPERATURE	140 Degrees F. (Intermittent)
MOTOR HOUSING	Cast Iron
VOLUTE	Cast Iron
SEAL PLATE	Cast Iron
IMPELLER	Cast Iron / Vortex
SOLIDS HANDLING	3"
SHAFT	Stainless Steel
SEAL PLATE	Cast Iron
SHAFT SEAL (SINGLE SEAL)	Single Mechanical, Carbon-Rotating Face, Ceramic-Stationary Face, Buna-N Elastomer, 300 Series Stainless Steel Hardware
BEARINGS (UPPER & LOWER)	Single Row, Ball, Oil Lubricated
HARDWARE	300 Series Stainless Steel
O-RINGS	Buna-N
CORD	10' Length standard. Up to 30' with plug and 100' without plug. (UL/CSA) (SO) 14 AWG (.375 OD), Type SJOW
MOTOR (SINGLE PHASE)	1 or 2 HP 3450 RPM. 60Hz, Includes Overload Protection in the Motor. Oil Filled, Class F Permanent Split Capacitor
WEIGHT	78 lbs. (Manual)



MODEL(S) INFORMATION

MODEL	HP	VOLTS	PHASE	AMPS	CORD LENGTH	SWITCH	REQUIRES PANEL
CPG1011V	1	115	1	13	10'	Vertical Float	No
CPG1012V	1	115	1	13	20'	Vertical Float	No
CPG1011(A)	1	115	1	13	10'	M (Wide-Angle Float)	No
CPG1012(A)	1	115	1	13	20'	M (Wide-Angle Float)	No
CPG1022(A)	1	208/230	1	7.2/6.5	20'	M (Wide-Angle Float)	No
CPG2021(A)	2	208/230	1	17/15	10'	M (Wide-Angle Float)	No
CPG2022(A)	2	208/230	1	17/15	20'	M (Wide-Angle Float)	No
CPGH2021(A)	2	208/230	1	17/15	10'	M (Wide-Angle Float)	No
CPGH2022(A)	2	208/230	1	17/15	20'	M (Wide-Angle Float)	No

Every pump tested in water to ensure pump meets performance curve.



FEATURES/BENEFITS

PERFORMANCE

- Heads up to 133' TDH
- Flows up to 44 GPM

MOTOR

- Internal or external capacitor start/capacitor run 208-230v, oil filled motors with upper and lower ball bearings and thermal over load protection
- Constant bearing lubrication
- Maximum motor cooling
- Runs cooler and lasts longer
- Internal overload protection
- Quiet operation
- Fasteners and shaft made from rugged, corrosion resistant stainless steel

SEAL DESIGN

- Double seal, oil filled chamber
- Provides added leakage protection
- Optional seal failure feature

IMPELLER DESIGN

- Non-clog style, cast-iron vortex impeller
- Designed to generate higher heads and reduce clogging by foreign materials
- Provides non-overloading performance

CUTTER ASSEMBLY

- 440 SST (56-60 Rockwell)
- 24,000 cuts per second and 1.5 million cuts a minute
- Designed to reduce over loading and clogging

POWER CORD

- Sealed entry quick disconnect power cords
- Prevents water from entering the motor housing through a cut cord
- Easy to replace in the field without having to run a new power cord
- Available in lengths up to 100'

SWITCH

- Piggy-back switch design
- Defective switches can be diagnosed over the phone
- Pump can be operated manually or supplied with other piggy-back switches
- Switch can be replaced without having to replace the pump

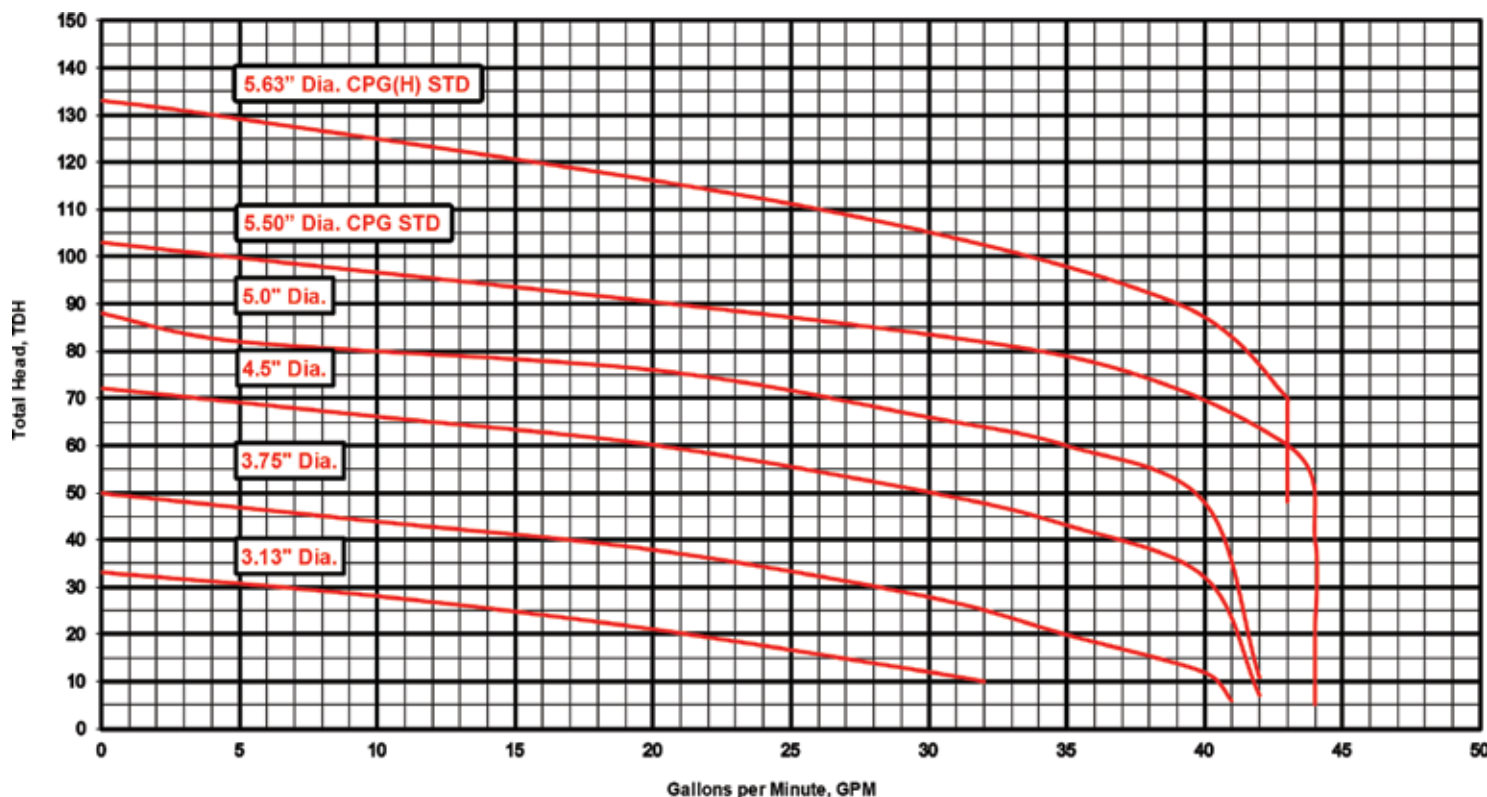
APPLICATIONS

Residential developments, commercial developments and wastewater applications



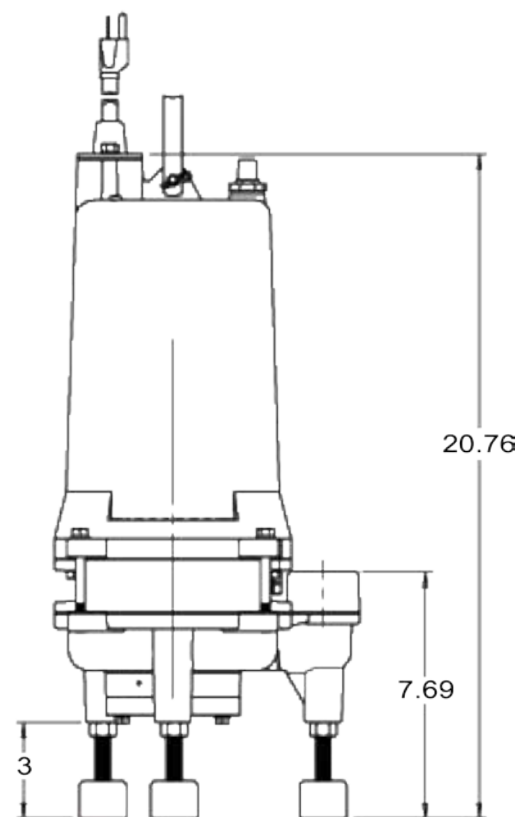
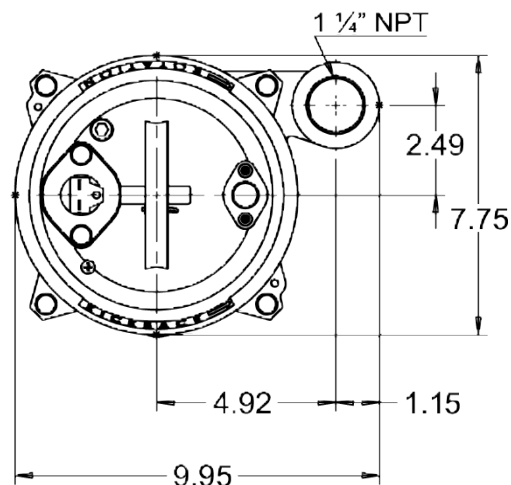
2 HP grinder pumps that have a 1 1/4" or 2" optional vertical discharge that handles up to 3" solids

PERFORMANCE CURVE



TECHNICAL DATA

DISCHARGE	1 1/4" NPT. vertical standard or optional 2"
SOLIDS HANDLING	3"
LIQUID TEMPERATURE	150 Degrees F. (Intermittent)
MOTOR HOUSING	Cast Iron
VOLUTE	Cast Iron
SEAL PLATE	Cast Iron
IMPELLER	Cast Iron / Vortex
SHAFT	Stainless Steel
SHAFT SEAL (DOUBLE SEAL) with optional seal fail	Tandem double mechanical upper & lower, carbon ceramic, Buna-N elastomer, 300 stainless steel hardware
BEARINGS (UPPER & LOWER)	Single row, ball, oil lubricated
HARDWARE	300 Series stainless steel
O-RINGS	Buna-N
CORD	Quick disconnect 20' cord standard. Up to 30' with a plug and 100' available without a plug. 3 phase 30' cord standard. UL/CSA (SJOW) 14/3 (.375 OD) * UL/CSA (SO) Cord 14 Ga. (.60)
MOTOR (SINGLE PHASE)	2 HP 3450 RPM. 60 Hz, Includes overload protection in the motor, oil filled, class F permanent split capacitor
WEIGHT	75 lbs. Single seal (Manual) 85 lbs. Double seal (Manual)



MODEL(S) INFORMATION

MODEL	HP	VOLTS	PHASE	AMPS	CORD LENGTH	SWITCH	REQUIRES PANEL
CPG2022DS(A)	2	208/230	1	17/15	20'	M (Wide-Angle Float)	No
CPG2023DS(A)	2	208/230	1	17/15	30'	M (Wide-Angle Float)	No
CPG2023DSL	2	208/230	1	17/15	30'	Manual	Yes
CPG2033DSL	2	208/230	3	10/9	30'	Manual	Yes
*CPG2043DSL	2	460	3	4.5	30'	Manual	Yes

Every pump tested in water to ensure pump meets performance curve.



RETRO-FIT PACKAGE FOR E/ONE* GRINDER SYSTEMS

Engineered as a fully equipped drop-in replacement kit for the GP200, GP2000 and extreme systems

FEATURES/BENEFITS

Champion's 2HP grinder pump available in standard CPG2021 model or CPGH2021 high head models

Completely assembled and ready for installation

NEMA 4x waterproof junction box with mounting tabs

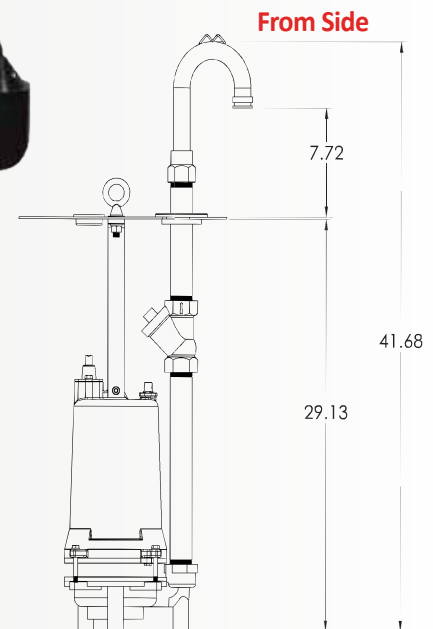
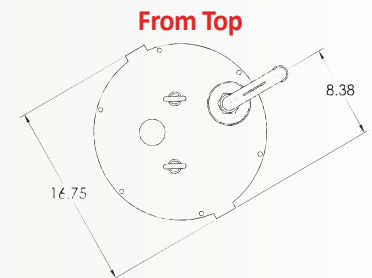
Package comes with floats, stainless steel piping, and powder coated steel replacement cover

6 Pin E/One* connector with a 2' cable lead fits into the existing E/One* connector. Both styles of connectors, new and old, are available

Alarm float, functions as a backup float, that triggers the alarm and turns on the pump if the main switch fails

"One Size Fits All" discharge elbow original equipment manual override switch remains operable

Rugged, heavy duty, cast iron grinder pumps designed for sewage and wastewater handling, residential and commercial applications



CPGRE Models



CPGRX Models

APPLICATIONS

Rugged, heavy duty, cast iron grinder pumps designed for sewage and wastewater handling, residential and commercial applications

Includes 10' Rope



Dual Purpose Float



JB664 Junction Box



See CPG series literature for complete model data and specs. Contact Engineers for specific sizing and Technical Questions

E/One® is a registered trademark of Environment One Corporation and is not affiliated with Champion Pump

UTILITY PUMPS



CPS5HT

Rugged, heavy duty, self-priming utility pump is designed for water transfer, draining hot water tanks

PERFORMANCE & FEATURES:

- 1/2 HP submersible high temperature (Pumps that handle up to 3/4" solids and have a 2" discharge)
- Heads up to 26' TDH and flow up to 43 GPM
- High efficient, oil filled, permanent split capacitor motor with upper and lower ball bearings and thermal overload protection
- Available in 115v or 230v
- Fasteners, handle, bracket and shaft made from rugged, corrosion resistant stainless steel
- Non-clog style, cast-Iron, vortex Impeller reduces clogging by foreign materials
- Sealed entry, quick-disconnect power cords available in lengths up to 100'
- Type 21 inboard seal design with secondary exclusion seal. Rotating components are in the motor housing, being lubricated by the motor oil, preventing foreign matter from wrapping around the seal components
- Designed for hot water applications up to 185°
- Pump dimensions:
11.7"H X 6.46"W X 9.4"
- Pump can also be operated manually



CPACE

Rugged, heavy duty, self-priming utility pump is designed for water transfer, draining hot water tanks

PERFORMANCE & FEATURES:

- 1/2 HP self-priming pump with air cooled motor. Discharges through a 1/2" discharge or 1/2" garden hose connector
- Heads up to 120' TDH and flow up to 25 GPM
- Glass reinforced plastic impeller
- 10' power cord
- Includes 1/2" garden hose connector, suction strainer and extra set of brushes



CPU16

Dependable utility pump designed for dewatering and water transfer. Pumps down to 1/8" without secondary screen

PERFORMANCE & FEATURES:

- 1/6 HP psc motor that discharges through a 1/2" garden hose connector
- Heads up to 27' TDH and flow up to 17.5 GPM
- High efficient, permanent split capacitor motor with upper and lower ball bearings
- Pumps down to 1/8" without secondary screen
- Nylon + 30% fiberglass impeller
- 10' power cord

SUBMERSIBLE SEWAGE, NON-CLOG



CP2SV
Stainless Series



CPG3-7.5



CPSE



CP3NC-DS



CP4CP



CP4NC-SS



CP4SE-DS



CP4NC-DS



CP4NC-H



CP6NC-1150



CP6NC-1750



CP6NC-H



CP8NC

Champion Pump provides you and your organization with most of our larger sewage and non-clog pumps in as little as 24 hours. We stock anything from 1.5 HP sewage pumps through 60 HP 8" Non clog pumps.

SELECTION CHART

MODEL	DISCHARGE	SOLIDS	HP	RPM	TDH MAX	FLOW MAX	MOTOR	SEAL
CP2SV Stainless Series	2" & 3"	1½" & 2"	.5,1,2 3,7.5	3500	99'	310 GPM	For continuous duty, 1 & 3 phase, 3450 RPM, dry type, insulation class B, protection IP68, 115, 230 & 460 volts. Built-in capacitor for single phase motors	Double
CPG3-7.5	2"	GRINDER	3,5,7.5	3450	160'	104 GPM	Single phase: NEMA L, capacitor start/run (to be located in control panel), 230 volts, 60 Hz, 3500 RPM, oil filled. Class F insulation. Three phase: NEMA B, 230 & 460 volts, 60 Hz, 3500 RPM, oil filled. Class F insulation.	Double
CPSE	3" NPT flange vertical	2½"	1.5,2, 3	1750	65'	435 GPM	Single phase: permanent split capacitor, 230 volts, 60 Hz, oil filled, with overload protection in motor. Three phase: 230/460 volts, 60 Hz, oil filled. Requires overload protection to be included in control panel.	Single
CP3NC-DS	3" flange horizontal	2½"	2-5	1750	65'	480 GPM	NEMA B, three phase, 230 & 460 volts, 60 Hz, oil filled, with class F insulation. Requires overload protection to be included in control panel.	Double
CP4CP	4"	CUTTER	3	1750	78'	645 GPM	Three phase: 3 HP - 10 HP, 1750 RPM, 60 Hz. Air-filled watertight, built-in overload, IP 68 protection and class B insulation	Double
CP4NC-SS	4" flange horizontal	3"	2.8-5	1750	47'	520 GPM	Single phase: NEMA L, permanent split capacitor, 230 volts, 60 Hz, oil filled NEMA B, three phase, 230 & 460 volts, 60 Hz, oil filled, with class F insulation. Requires overload protection to be included in control panel.	Single
CP4SE-DS	4" flange horizontal	3"	2-7.5	1750	60'	620 GPM	NEMA B, three phase, 230 & 460 volts, 60 Hz, oil filled, with class F insulation. Requires overload protection to be included in control panel.	Double
CP4NC-DS	4" flange horizontal	3"	4.5-15	1750	100'	940 GPM	Single phase: NEMA L, permanent split capacitor, 230 volts, 60 Hz, oil filled NEMA B, three phase, 230 & 460 volts, 60 Hz, oil filled, with class F insulation. Requires overload protection to be included in control panel.	Double
CP4NC-H	4" flange horizontal	3"	7.5-15	1750	92'	900 GPM	NEMA B, three phase, 230/460 volts, 60 Hz, oil filled. Requires overload protection to be included in control panel	Double
CP6NC-1150	6" flange horizontal	4"	9-30	1150	114'	2000 GPM	NEMA B, three phase, 230/460 volts, 60 Hz, oil filled. Requires overload protection to be included in control panel	Double
CP6NC-1750	6" flange horizontal	4"	18-60	1750	160'	1920 GPM	NEMA B, three phase, 230/460 volts, 60 Hz, oil filled. Requires overload protection to be included in control panel	Double
CP6NC-H	6" flange horizontal	3"	30-60	1750	158'	2500 GPM	NEMA B, three phase, 230/460 volts, 60 Hz, oil filled. Requires overload protection to be included in control panel	Double
CP8NC	8" flange horizontal	3"	36-48	1150	76'	4250 GPM	NEMA B, three phase, 230/460 volts, 60 Hz, oil filled. Requires overload protection to be included in control panel	Double

BACK-UP SYSTEMS



BBUP BATTERY BACKUP SYSTEM

The BBUP 900, 1500 and 2300 simplex inverter systems convert battery power to run your standard 115V pump

PERFORMANCE & FEATURES:

- Automatically switches to battery power
- Provides full pump performance, operating on AC or DC power
- Primary pump runs on battery when AC power is not available
- Do not need a second pump for system
- Proper sized inverter will run two pumps
- Indicator lights for mode of operation
- System includes: 1 pump, inverter, switch, cables, battery box and check valve. Battery not included

INVERTERS

Inverters may be purchased separately.



BBUPD DUPLEX BACKUP SYSTEM

The BBUPD 900, 1500 and 2300 duplex inverter systems convert battery power to run your standard 115V pumps

PERFORMANCE & FEATURES:

- Automatically switches to battery power
- Provides full pump performance, operating on AC or DC power
- Complete system runs on battery power when AC power is not available
- Pumps alternate so that both pumps get used equally
- Second pump will automatically come on if first pump does not keep up with incoming flow or fails
- Built in alarm will sound if both pumps can't keep up with incoming flow
- Utilizes one switch for protection against switch failure
- Self diagnoses and will notify if pump fails
- System includes: 2 pumps, inverter, 2 switches, cables, battery box and 2 silent check valves. Battery not included

CHECK VALVES



RUBBER HOSE, SLIP X SLIP

FEATURES/BENEFITS

Rubber hose valves are designed for easy installation over standard sump pump lines • Flappers are nested and have a convex shape for a long life • Stainless steel worm gear clamps • Special texture on housing for improved hose grip • Hydrodynamic shape • Durable, injection molded & gasketless ABS housing • Fits copper, PVC, or IPS pipe • Can be mounted vertically or horizontally • SILENT operating check valve, eliminates hammering • 24-1515-0003 has 1-1/2 Full Flow that is optimized to fit only 1-1/2" pipe offering 17% improved flow capability

Certain models available with clear housings, special order only

APPLICATIONS

Designed for standard residential sump pump applications



COMPRESSION SWING

FEATURES/BENEFITS

Compression valves are designed for easy installation that require no glue for standard sump pump lines • Flappers are nested and have a convex shape for long life • Ball valves have EPDM O-ring seats • Durable, Injection molded and gasketless ABS Housing • Fits PVC pipe • SILENT operating check valve, eliminates hammering

Certain models available with clear housings, special order only

APPLICATIONS

Designed for standard sump pump applications



TRUE UNION SWING

FEATURES/BENEFITS

True union coupling allows easy swing out for service or inspection and have EPDM O-ring seals • Flappers are nested and have a convex shape for long life • Ball valves have EPDM O-ring seats • Durable, Injection molded and gasketless ABS housing • Fits PVC pipe • SILENT operating check valve, eliminates hammering • Durable, Injection molded and gasketless ABS housing on certain models

Certain models available with clear housings, special order only

APPLICATIONS

Designed for heavy duty use on home ejector pump applications



SLIP X SLIP

FEATURES/BENEFITS

Slip x Slip valves are designed with slip ends that allows quick installation over PVC pipe • Flappers are nested and have a convex shape for long life • Hydrodynamic shape • Durable, Injection molded and gasketless ABS housing • Fits PVC pipe • Can be installed vertically or horizontally • SILENT operating check valve, eliminates hammering monitoring

Certain models available with clear housings, special order only

APPLICATIONS

Designed for standard sump pump applications

REF ID	MODEL	SIZE	DESCRIPTION	CARTON QTY
A	24-1515-0000	1 1/2"	ABS CHECK VALVE	24
B	24-1112-0004	1 1/4" & 1 1/2"	COMBINATION ABS CHECK VALVE	24
C	24-1515-0003	1 1/2"	FULL FLOW ABS CHECK VALVE	24
D	24-2020-0000	2"	FULL FLOW ABS CHECK VALVE	12
E	24-1515-SL00	1 1/2"	SILENT CHECK VALVE	16
F	24-2020-SL00	2"	SILENT CHECK VALVE	12
G	24-2020-0003	2"	COMPRESSION SWING CHECK VALVE	6
H	24-2020-0004	2"	BALL/CHECK COMPRESSION SWING COMBO	6
I	24-2020-SL03	2"	SILENT COMPRESSION SWING CHECK VALVE	6
J	24-2020-SL04	2"	SILENT BALL/CHECK COMPRESSION SWING COMBO	6
K	24-1515-0002	1 1/2"	TRUE UNION SWING CHECK VALVE	9
L	24-2020-0002	2"	TRUE UNION SWING CHECK VALVE	6
M	24-15BC-0002	1 1/2"	BALL/CHECK UNION SWING COMBO	9
N	24-20BC-0002	2"	BALL/CHECK UNION SWING COMBO	6
O	24-1515-SL02	1 1/2"	SILENT TRUE UNION SWING CHECK VALVE	9
P	24-2020-SL02	2"	SILENT TRUE UNION SWING CHECK VALVE	6
Q	24-15BC-SL02	1 1/2"	SILENT BALL/CHECK UNION SWING COMBO	9
R	24-20BC-SL02	2"	SILENT BALL/CHECK UNION SWING COMBO	6
S	CVSLIP15	1 1/2"	SLIP x SLIP ABS CHECK VALVE	24
T	CVSLIP20	2"	SLIP x SLIP ABS CHECK VALVE	12
U	24-1515-SL03	1 1/2"	SILENT SLIP x SLIP ABS CHECK VALVE	24
V	24-2020-SL05	2"	SILENT SLIP x SLIP ABS CHECK VALVE	12

FIBERGLASS & POLY PRODUCTS



FIBERGLASS PRODUCTS

- Fiberglass Basins
- Fiberglass Basin Accessories
- Fiberglass Extensions
- Basin Covers
- Basin Cover Accessories
- H2O Covers
- Fiberglass Triple Garage Basins
- Prefabricated Lift-out Stations

POLY PRODUCTS

- Sump Pit & Sewage Basins
- Covers & Accessories
- Water Boxes & Sink Trays
- Triple Garage Systems
- Pump Jon

QUICK SHIP PROGRAM

- Complete simplex and duplex packages can ship within 24 Hours



EZ Series®

This line of innovative, affordable control panels is designed to make on-site installations easier. EZ Series® control panels combine circuit board technology and easy operation for on-site applications. UL/CUL Listed.

An optional mounting post featuring a removable access door for easy wiring is available. The post can be mounted directly into the ground, over a 4x4 post or conduit for a quick, clean, easy installation.

Get In-Site to On-Site™

EZ Series® In-Site® CL control panels now feature a Bluetooth® smart module to enable wireless connection to Android or iOS devices!

- 3 Eliminates need for PC
- 3 Eliminates opening the panel for configuration, viewing status or data download
- 3 Enables safe and secure access to the panel in all weather conditions.



C-LEVEL™ FLOATLESS TECHNOLOGY!

The EZ Series® In-Site® CL Bluetooth® panels utilize the C-Level™ floatless sensor:

- Uses pressure to detect liquid level in tank and sends signal to the panel
- Compact design; low voltage
- Easy to adjust set points
- One sensor replaces up to 4 floats
- CL 40 (range up to 40 inches) or CL 100 (range up to 100 inches)

EZ Series® Single Phase Simplex Demand/Timed Dose and Duplex Demand



DUPLEX DEMAND

- Designed to control one or two single phase 120/208/240V pump(s)
- Panel Features: NEMA 4X enclosure, locking latch, red LED alarm beacon on cover, external indicators for control power, alarm power and pump run, external test/silence switch, digital display, pump run button, menu buttons, large terminal block, circuit breakers, and pump run relay
- Digital Display Features: float status, elapsed time pump run, cycle counter, alarm counts, float error count, auxiliary alarm counter, timer override count (TD only), on time (TD only), off time (TD only)
- UL/CUL Listed

EZ Series® In-Site® CL with Bluetooth® Single Phase Simplex or Duplex Demand/Timed Dose

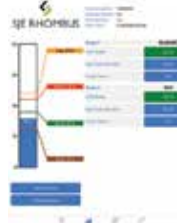


DUPLEX DEMAND/TD BLUETOOTH

Data logging panel features wireless Bluetooth® connection for your smartphone or tablet. No need to open the panel for configuration, viewing status or downloading data using the new EZ Connect™ Mobile app.

- Designed to control one (simplex) or two (duplex) single phase 120/208/240V pump(s)
- Panel configuration can be easily converted in the field to either demand dose or timed dose using a tablet or smartphone
- System data including pump run times, pump cycles, alarm conditions, power outages, and more can be downloaded to the same mobile device using the exclusive EZ Connect Mobile App.
- UL/CUL Listed

EZ Connect Mobile App



The Bluetooth® word mark and logos are registered trademarks owned by Bluetooth SIG, Inc. and any use of such marks by SJE Rhombus® is under license. Other trademarks and trade names are those of their respective owners.

EZ SERIES PLUGGER



- Built-in high water alarm and receptacle to accept a 120V or 230V pump and a piggy-back pump switch
- Panel Features: NEMA 4X enclosure, locking latch, red LED alarm beacon, audible alarm, alarm fuse, external test/normal/silence switch
- UL/CUL Listed

Xpert Alert WiFi Alarm



Indoor alarm features 2 sensor inputs to monitor 2 separate level conditions • LED alarm light ring illuminates red for alarm 1 and amber for alarm 2 • Red low temperature LED activates when temperature falls below 40°F (4°C) • Large test/silence button on front • Includes auxiliary contacts • Provides 24/7 remote notification up to 4 contacts (2 email, 2 text) • Text/email alerts: alarm offline, power out/restored, low temperature/battery • CSA certified

Xpert Alert Alarm



Indoor DUO alarm system monitors two levels conditions • NEMA 1 rated for indoor use • Alarm test switch, horn silence switch • LED indicator lights (red - alarm 1; yellow - alarm 2; green power on) • Battery backup • CSA Certified

Tank Alert AB Duo Alarm



Indoor DUO alarm system monitors two levels conditions • NEMA 1 rated for indoor use • Alarm test switch, horn silence switch • LED indicator lights (red - alarm 1; yellow - alarm 2; green power on) • Battery backup • CSA Certified

Tank Alert XT Alarm



The Tank Alert® XT indoor/outdoor alarm meets NEC standards for junction boxes. OPTION: Pre-mounted terminal block so enclosure can be used as junction box for cord splices • Rain-tight outdoor enclosure • Automatic alarm reset, horn silence switch, alarm test switch • UL Listed; CSA Certified

Tank Alert I Alarm



The Tank Alert® I indoor alarm sounds when a potentially threatening liquid level occurs. Alarm (when installed on separate circuit) operates even if pump circuit fails • NEMA 1 rated for indoor use • Red alarm light, green power light, alarm test switch, horn silence switch • UL Listed; CSA Certified

Tank Alert 4X Alarm



The Tank Alert® 4X indoor/outdoor alarm sounds when a potentially threatening liquid level condition occurs • NEMA 4X enclosure • Automatic alarm reset, alarm test/normal/silence switch • Optional auxiliary alarm contacts • UL/CUL Listed

Tank Alert AB Alarm



The Tank Alert® AB indoor alarm offers auto reset and battery backup features. The horn sounds when a potentially threatening liquid level occurs • NEMA 1 rated for indoor use • Red alarm light, green power light, alarm test switch, horn silence switch • UL Listed; CSA Certified

Tank Alert EZ Alarm



Tank Alert® EZ indoor/outdoor alarm features removable cover for easy installation • Sleek, innovative design features a distinct 2-color molded enclosure • Integrated LED beacon • External mounting tabs • Alarm test/silence switch • DUO models available • CSA Certified

Tank Alert Solar Alarm



Powered by a rechargeable battery via 12 VDC, 10 watt solar panel • Lithium Ion batteries provide backup power • Safe, low voltage connections for solar panel and float • NEMA 4X enclosure rated for indoor or outdoor use • Integral mounting tabs for easy installation

PUMP SWITCHES

Wide-angle pump switches directly control pumps up to 3 HP at 250 VAC. Each switch features an adjustable pumping range.

CONTROL SWITCHES

Narrow-angle control switches accurately monitor high (normally open) or low (normally closed) liquid level conditions in water and sewage applications to activate control panels and alarms. Select models have colored caps for easy identification.



Pump Switch	Type of Activation	Pump Control	Max Pump Run Current	Max Pump Start Current	Pumping Range
SJE PumpMaster® WPS	Mechanical	"1/2 HP, 120V 1 HP, 230V min load: 120V, 100mA"	"13A, 120V 13A, 230V"	"85A, 120V 85A, 230V"	7 to 36 inches
SJE PumpMaster®	Mechanical	"1/2 HP, 120V 1 HP, 230V"	"13A, 120V 13A, 230V"	"85A, 120V 85A, 230V"	7 to 36 inches
SJE PumpMaster® Plus	Mechanical	"3/4 HP, 120V 2 HP, 230V"	"15A, 120V 15A, 230V"	"85A, 120V 85A, 230V"	7 to 36 inches
"SJE PumpMaster® SPDT (Single Pole, Double Throw)"	Mechanical	"1/2 HP, 120V 1 HP, 230V"	"13A, 120V 13A, 230V"	"85A, 120V 85A, 230V"	7 to 36 inches
Double Float® Master	Mechanical	"15 FLA, 90 LRA 120 or 240 V"	"15A, 120V 15A, 230V"	"90A, 120V 90A, 230V"	4 to 48 inches (wider available)
SJE AmpMaster®	Mechanical	"1 1/2 HP, 120V 3 HP, 250V"	"20A, 120V 20A, 230V"	"120A, 125V 120A, 250V"	9 to 24 inches
"SJE VerticalMaster® (For Limited Space Applications)"	Mechanical	"1/2 HP, 120V 1 HP, 230V"	"13A, 120V 12A, 230V"	"60A, 120V 60A, 230V"	.75 to 6.5 inches
SJE MicroMaster® AC/DC	Mechanical	Use Pump Run and Start Current	"10A, 12VDC- C/125VAC 8A, 250VAC"	"100A, 12VDC 60A, 125V/250V"	8 to 36 inches
SJE MicroMaster® Plus WS	Mechanical	Use Pump Run and Start Current	"13A, 125V 15A, 250V"	"78A, 125V 78A, 250V"	8 to 36 inches
Junior Super Single®	Mercury	"1/2 HP, 120V 1 HP, 230V"	"13A, 120V 8A, 230V"	"40A, 120V 20A, 230V"	6.5 to 19 inches
Super Single®	Mercury	"1 HP, 120V 2HP, 230V"	"15A, 125V 12A, 230V"	"55A, 125V 35A, 230V"	6.5 to 13.5 inches
Double Float®	Mercury	"1 HP, 120V 2 HP, 230V"	"15A, 120V 12A, 230V"	"55A, 120V 35A, 230V"	1.75 to 48 inches (wider available)
SJE HiTempMaster®	Mechanical	Use Pump Run and Start Current	"13A, 120V 13A, 230V"	"78A, 125V 78A, 250V"	8 to 36 inches

Control Switch	Type of Activation	Control Differential	Electrical Rating	Mounting Options
EZconnex® 3 or 4-Port Float Connection System	Mechanical	Narrow 1.5 inches; Wide 4 inches above or below horizontal	"125VAC/30VDC 0.160mA-A; 5VDC 1mAmin."	Mounting Clamp
SJE MegaMaster™	Mechanical	Approximately 10" above or below horizontal	1 mA - 1 amp 4VDC - 125VDC	Float Bracket
"SJE SignalMaster® (NO - Yellow Cap; NC - White Cap)"	Mechanical	Approximately 1.5 inches above or below horizontal	5 amp 125V or 250V	Mounting Clamp or Cable Weight
"SJE SignalMaster® SPDT (Single Pole, Double Throw; Green Cap)"	Mechanical	Approximately 1.5 inches above or below horizontal	5 amp 125V or 250V	Mounting Clamp or Cable Weight
"SJE MilliAmpMaster™ WPS (Narrow-Angle; Orange Cap)"	Mechanical	Approximately 1.5 inches above or below horizontal	0.160 - 100 mA 5V - 125V	Mounting Clamp
"SJE MilliAmpMaster™ (Narrow-Angle or Wide-Angle; Blue Cap)"	Mechanical	Narrow 1.5 inches; Wide 4 inches above or below horizontal	0.160 - 100 mA 5V - 125V	Mounting Clamp or Cable Weight
Sensor Float®	Mercury	Approximately .5 inches above or below horizontal	5 amp 120V or 230V	Mounting Clamp, Cable Weight, Internal Weight
Sensor Float® Mini	Mercury	Approximately .5 inches above or below horizontal	5 amp 120V or 230V	Mounting Clamp or Cable Weight

CUSTOM BUILT CONTROL PANELS

ELECTRIC CONTROL PANELS, QUALITY PARTS AND ACCESSORIES PROVIDER



We work closely with you to prepare quotes and submittals to meet specs on the required deadline. Quotes delivered within 24-48 hours and submittals, if requested, within 48-72.



Once you've submitted your PO, our team will get to work to build your panel, ready within 2-3 weeks from order, depending on part availability.



Prior to shipping all panels are inspected and tested to ensure your panel is built to the required specifications.

Stock panels with high water alarm and separate alarm circuit breaker:

- CPSIM
115V-230V simplex
- CPSIM-TD
115V-230V simplex - timed dose with elapsed time meter & cycle counter
- CPDUP
115V-230V duplex
- CPSIM23RSSF
230V simplex grinder panel with start and run capacitors and seal fail
- CPDUP23RSSF
230V duplex grinder panel with start and run capacitors and seal fail

ACCESSORIES

Flo *Pro*



Champion Pump offers a full line of FloPro lift station accessories that include base elbow rail systems for 1 1/4" through 6" pumps, upper guide brackets, intermediate guide brackets, bulk chain & shackles, float brackets, tank vents and more. Having the luxury of an interchangeable rail system that is compatible with pumps in today's market, as well as the ability to adapt to many existing rail systems in the field, Champion Pump prides itself on having the correct solution for the job.



UPPER GUIDE BRACKETS

Made From
304 Stainless Steel



INTERMEDIATE GUIDE BRACKETS

Made From 304
Stainless Steel



REPLACEMENT LIFT-OUT FLANGE

Ductile Iron with Powder
Coat Finish and Stainless
Steel Accessories



BASE ELBOW EXTENSION STAND

10" Extension Stand to Raise
Base Elbow for 1 1/4" - 3"
Applications

ACCESSORIES



CHAIN ANCHOR & KITS

Custom Kits can be Made to any Length and Number of Shackles/Float Clamps



PULL-OUT KITS

Complete with Type-304 Stainless Steel Hardware and Red Rubber Gasket



REPLACEMENT PARTS 1 1/4" - 3"



EZ REPLACEMENT PARTS
Compatible With Any EZ Style Base Elbow



ADAPTERS



CHAIN

Sold by the Foot or Barrel Quantities All Chain is Type-316 Stainless Steel



SHACKLES

All Shackles are Type-316 Stainless Steel



CHAIN GRABBER

Works with Chain sizes 1/8"-3/8"
Made From 1/2" Thick Type-304 Stainless Steel



CHAIN & SHACKLE KIT

Custom Kits can be Made to Any Length and Number of Shackles



QUICK LINKS

All Quick Links are Type-316 Stainless Steel



EYE BOLTS

All Eye Bolts are Made From Type-304 Stainless Steel



CPGRE Models



CPGRX Models



RWG RERO FIT

Retrofit for Existing 1 1/4" RWG Stations



PIPE GROMMETS



INLET HUBS

Includes Stainless Steel Mounting Hardware and Gasket Tape



FULL GASKETS AND SEALING RINGS



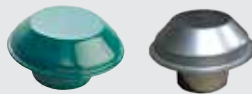
FULL COUPLINGS

Includes Stainless Steel Mounting Hardware and Gasket Tape



BALL CHECK VALVES

Cast Iron Construction with Solid Rubber Nitrile Ball



TANK VENTS

Weatherproof, Bug Proof and Powder Coated for Corrosion Resistance



FIBERGLASS FLANGES

Plastic Reinforced Fiberglass, UV Resistant



CLOSE NIPPLE

Schedule 80 PVC



L-TYPE FLOAT BRACKETS

Made from 304 Stainless Steel, Includes Cord Snubbers



U-TYPE FLOAT BRACKETS

Made from 304 Stainless Steel



T-TYPE FLOAT BRACKETS

Made from 304 Stainless Steel, Includes Cord Snubbers



FLOAT BRACKET HOLDER

Mountable Float Bracket Holder for Quick and Easy Removal/Installation



GATE VALVES & EXTENSION RODS

Brass Forged Body, Individually Tested

SIZING CHART

FRICITION LOSS PER 100' OF PLASTIC PIPE

FLOW RATE GPM	1-1/4"	1-1/2"	2"	3"	4"
10	1.4	0.7	0.2		
12	2.0	0.9	0.3		
14	2.7	1.3	0.4		
16	3.5	1.6	0.5		
18	4.3	2.0	0.6		
20	5.2	2.4	0.9		
22	6.0	2.8	1.1		
24	7.1	3.2	1.2		
26	8.3	3.8	1.4		
28	9.5	4.5	1.6		
30	10.8	5.2	1.8		
35	14.7	7.0	2.4		
40	18.8	8.8	3.1	0.4	
45	23.5	11.0	3.9	0.6	
50	28.2	13.3	4.7	0.7	
55	33.8	16.0	5.6	0.8	
60	40.0	18.6	6.5	0.9	
65	46.7	21.6	7.6	1.1	
70	53.1	24.9	8.6	1.2	
75	60.6	28.2	9.8	1.4	
80	68.2	32.0	11.1	1.5	
85	77.0	35.3	12.5	1.7	
90	84.6	39.5	13.8	1.9	
95	92.2	43.7	15.3	2.1	
100	102.0	47.9	16.8	2.3	0.6
110		57.3	20.2	2.8	0.7
120		67.2	23.5	3.3	0.8
130		78.0	27.3	3.8	0.9
140		89.3	31.5	4.3	1.1
150			35.7	4.9	1.2
160			40.4	5.5	1.4
170			45.1	6.3	1.5
180			50.3	6.6	1.7
190			55.5	7.3	1.9
200			60.6	8.4	2.1

MINIMUM GPM TO CARRY SOLIDS 2' PER SECOND

9 GPM IN 1-1/4" PIPE	12 GPM IN 1-1/2" PIPE	21 GPM IN 2" PIPE	46 GPM IN 3" PIPE	79 GPM IN 4" PIPE
----------------------	-----------------------	-------------------	-------------------	-------------------

EQUIVALENT LENGTH OF PIPE IN FEET

TYPE OF FITTING	1-1/4"	1-1/2"	2"	3"	4"
90 STD. ELBOW	7.0	8.0	9.0	12.0	14.0
45 ELBOW	3.0	3.0	4.0	6.0	8.0
STD. TEE (DIVERSION)	7.0	9.0	11.0	17.0	22.0
CHECK VALVE	11.0	13.0	17.0	26.0	33.0
COUPLING OR QUICK DISCONNECT	1.0	1.0	2.0	4.0	5.0
GATE VALVE	0.9	1.1	1.4	2.0	2.3

Champion Pump



CHAMPION PUMP COMPANY, INC. | PO BOX 528, ASHLAND, OH 44805
PHONE: 419-281-4500 | WWW.CHAMPIONPUMP.COM | SALES@CHAMPIONPUMP.COM