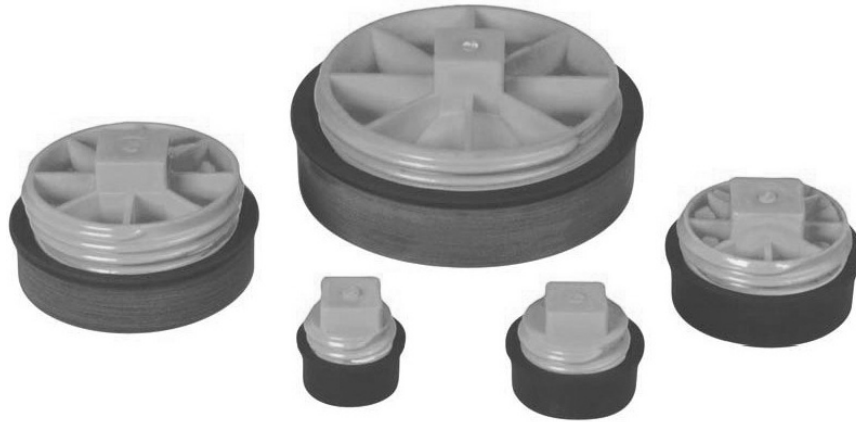




T-Cone Combination Cleanout Test Plugs

SPECIFICATION

Furnish and install reusable combination cleanout test plug, capable of testing up to 50 feet of head pressure. Unit shall be Water-Tite product code checked below as manufactured by IPS Corporation.



Product Code #	Product Descriptions	Model Number	Units per Case	UPC
86375	Tests 1 1/2" Sch. 40 DWV	S 152	50	012181-863756
86385	Tests 2" Sch 40 DWV & Type "M" Copper Tube	S 202	50	012181-863855
86520	Flush Mount Recessed Plug, Tests 2" Sch. 40 DWV	CS 202	50	012181-865200
86390	Tests 3" Sch. 40 & Copper DWV; 2" Cast Iron Hub	S 302	10	012181-863909
86526	Flush Mount Recessed Plug, Tests 3" Sch. 40 & Copper DWV, Type "M" Copper	CS 302	50	012181-865262
86455	Tests 3" Sch. 40 Socket	S 300	50	012181-864556
86395	Test 4" Type "M" Copper Tube, Cast Iron Closet Bend (SW), VDP Barrel	S 401	50	012181-863954
86400	Test 4" Sch. 40 & Copper DWV, PVC S&D, Cast Iron & VCP Barrel; 3" Cast Iron Hub	S 402	10	012181-864005
86535	Flush Mount Recessed Plug; Tests 3" Sch. 40 & Copper DWV, PVC S&D, Cast Iron Barrel	CO 402	50	012181-865354
86420	Test 6" Copper DWV, PVC PSM (SDR 35), PVC DR-14, CI & VCP Barrel	S 601	36	012181-864203
86425	Tests 6" Sch. 40 DWV, PVC DR-18, Cast Iron Barrel (EH)	S 602	36	012181-864258
86435	Tests 8" Sch. 40 DWV, PVC PSM (SDR 35), PVC DR-18, VCP Barrel	S 802	20	012181-864357



500 Distribution Parkway, Collierville, TN 38017 ■ TEL: 800-888-8312 ■ Fax: 901-853-5008 ■ www.ipscorp.com