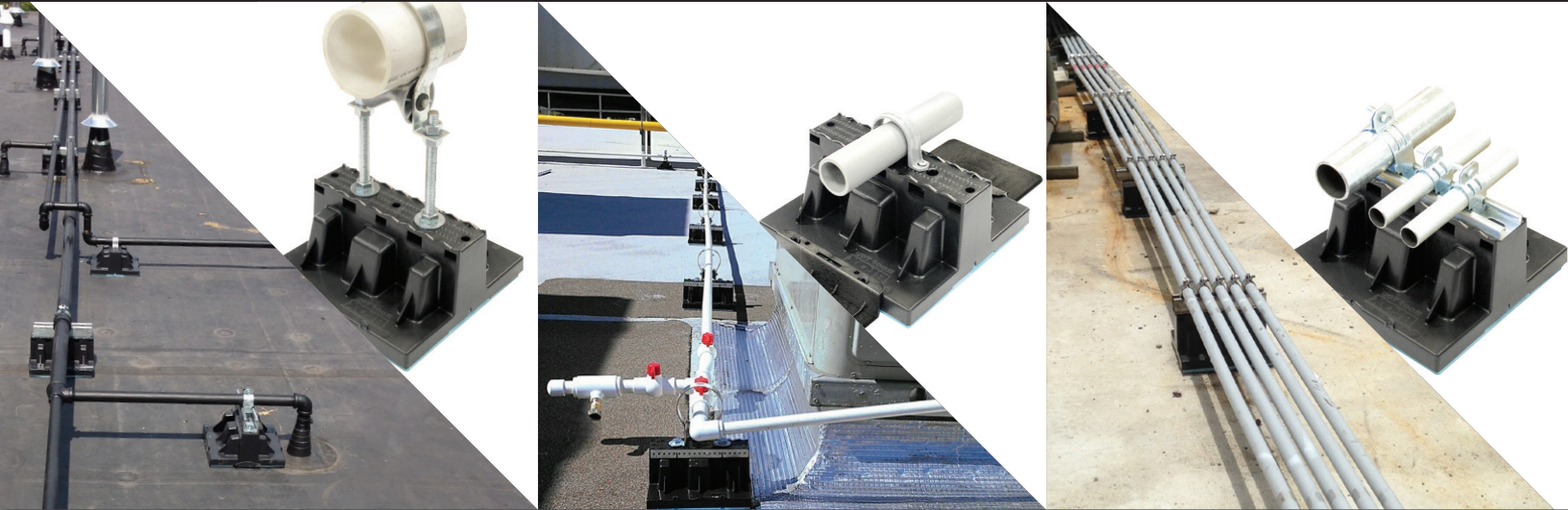


Roof Top[®] **BLOX**



ADJUSTABLE PIPING SUPPORT

REVOLUTIONARY VERSATILE EFFICIENT

The Roof Top Blox® is a revolutionary roof top support block system that works with height extension rods, securing brackets, pipe rollers, strut, and more. The Roof Top Blox is versatile enough for every roof plumbing support, roof piping support, and roof platform support need. In addition, the lightweight conveniently wrapped 8-pack makes transporting roof support blocks to the job - and roof top - a faster and more efficient process.

Roof Top Blox are the perfect solution for supporting piping and equipment on flat commercial roofs. Engineered with contractors in mind, the Roof Top Blox system is designed to be quickly installed, expanded, and adjusted from just the top side.

Easier installation and lasting dependability make the Roof Top Blox the best roof block choice to specify and install for supporting pipes and mechanical equipment on flat commercial roofs.



Roof Top Blox are designed specifically as roof supports to be used on commercial roof piping support and platform support applications.

FAST FACTS

IAPMO R&T certification

Low installation costs

Made from recycled materials (may qualify for LEED credits)

Product testing information available

20 year warranty

No roof penetration required

Suitable for any roofing material and will not damage roof

One Blox, multiple configurations

Securing Brackets (SCB07) secure Blox directly to roof surface. Recommended for long piping runs.

Roof top support blocks for gas piping, plumbing, HVAC, conduit, cable tray, and mechanical equipment

Compact and lightweight contractor-friendly 8-pack

All accessories install-from-the-top

APPLICATIONS

Gas piping roof top support

Plumbing roof top support

Electrical conduit roof top support

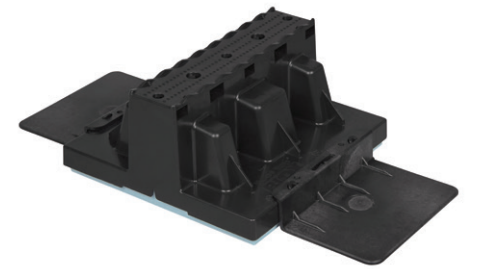
Cable tray roof top support

Refrigeration piping roof top support

Solar piping roof top support

HVAC ductwork and equipment

Mechanical platforms and walkways



Roof Top Blox with SCB07



8-pack



BETTER BY DESIGN. BETTER BY CONSTRUCTION.

The Roof Top Blox® system provides patented advantages for roof top pipe support and roof top platform support solutions through versatile support configurations that can combine multiple roof support blocks with accessories.



1 Reinforced Screw Starter Guides
For easier, stronger attachment

2 Unique Pipe Saddle Design
Neatly holds and aligns piping

3 Nut Slots & Extension Rod Ports
Install-from-the-Top Engineering

4 Steel Strut Alignment Trough
Neatly holds and aligns strut

5 Securing Brackets
Recommended for use with long piping runs

6 Height Extension
Adds 1-1/2" to Blox height and mimics features on top of the Blox

7 On-board Pipe Strap
Convenient galvanized strap included

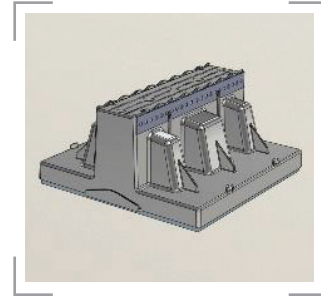
8 Stable Design
Wide footprint with interlocking ends for expandable lengths

9 Cushioned Base
Structural foam protects roof membrane

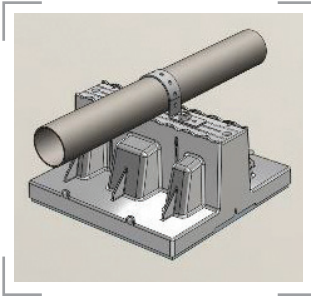
10 Heavy-Duty Lasting Construction
UV-resistant resin withstands the elements

Compact and lightweight contractor-friendly 8-pack tote is easy to transport

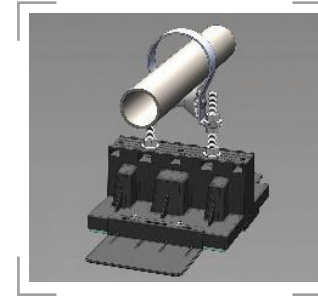
Refer to the corresponding configuration numbers at rooftopblox.com for downloadable specs and bills of material



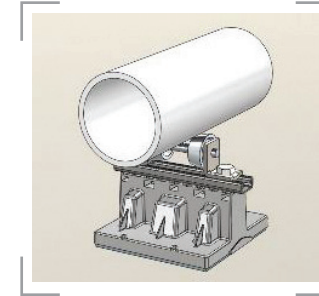
010:
Roof Top Blox



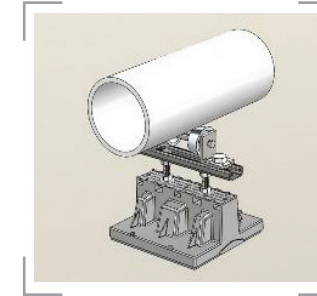
011:
Perforated Pipe Strap



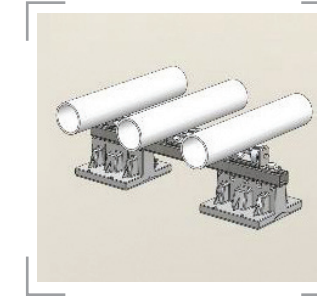
055:
Blox with 1"-3" Pipe Roller
& Securing Brackets



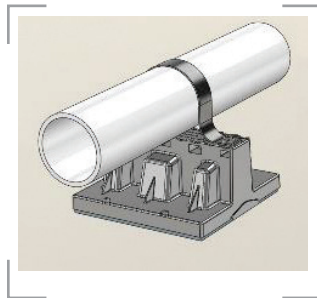
061:
4"-6" Pipe Roller



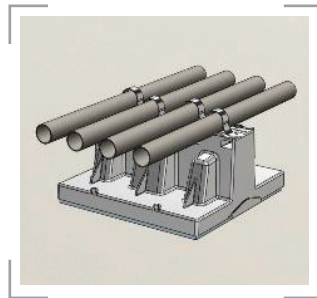
062:
Elevated 4"-6" Pipe Roller



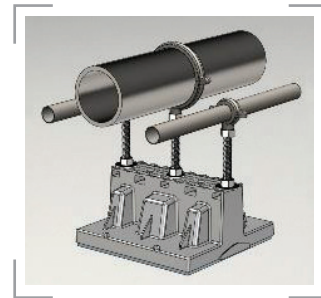
063:
Two Blox with Multiple
4"-6" Pipe Rollers



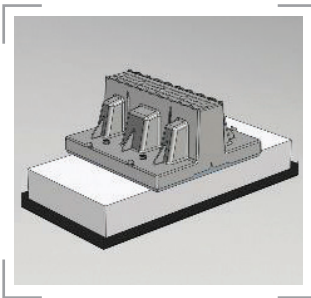
012:
Single Pipe U-Clamped



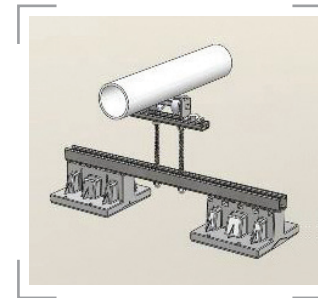
013:
Multiple Pipes Clamped



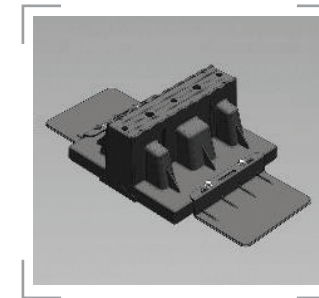
014:
Elevated Split Ring Clamps



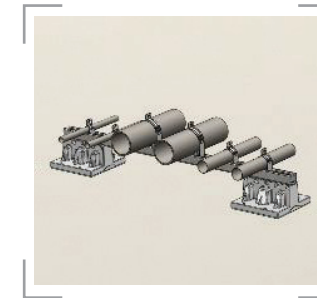
015:
Concrete Anchor Weights



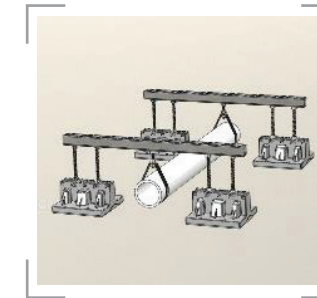
064:
Two Blox with Elevated
4"-6" Pipe Rollers



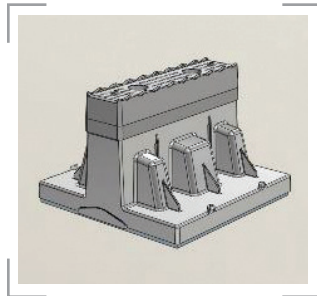
071:
Blox with Securing Brackets



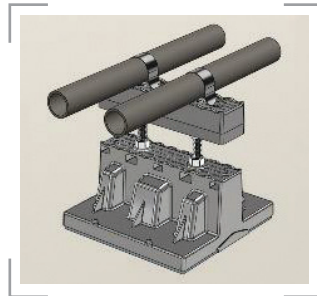
081:
Two Blox Bridge with Multiple
Pipes & Strut Clamps



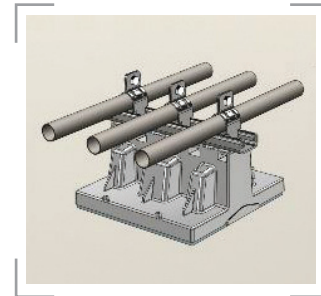
082:
Two Blox Bridge with
Underhung Piping



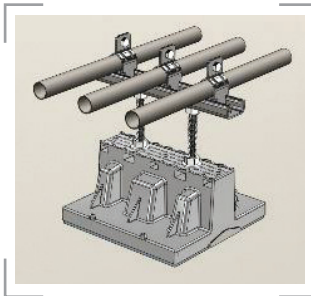
021:
1-1/2" Height Extension



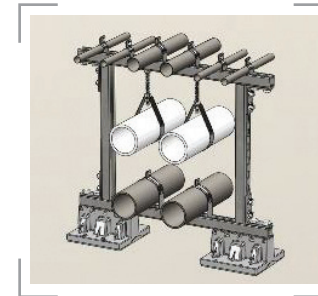
022:
Elevated Height Accessory



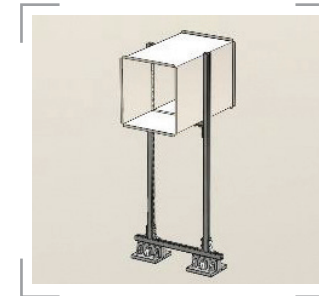
041:
Attached Strut



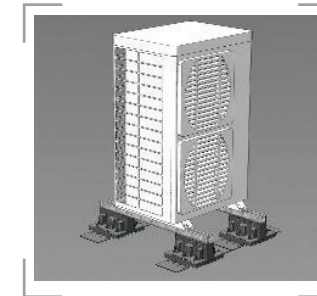
042:
Elevated Strut



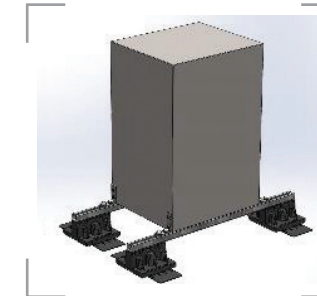
083:
Two Blox 2-Tier Bridge
Piping Rack



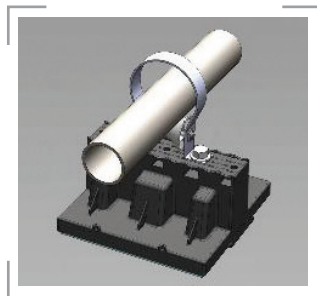
084:
Two Blox Ductwork Stand



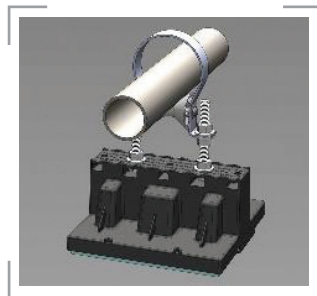
087:
Four Blox Condensing
Unit Support with SCB07



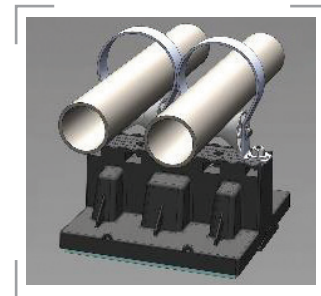
088:
Mechanical/Electrical Stand with
Securing Brackets (SCB07)



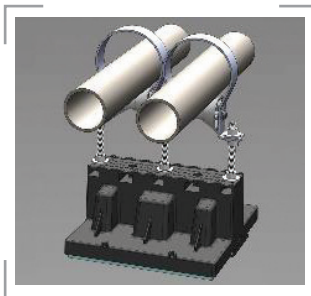
051:
1"-3" Pipe Roller



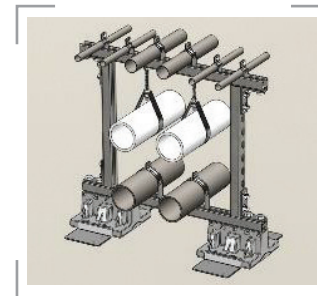
052:
Elevated 1"-3" Pipe Roller



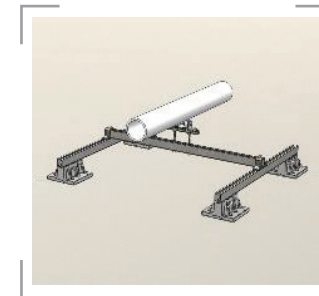
053:
Two 1"-3" Pipe Rollers



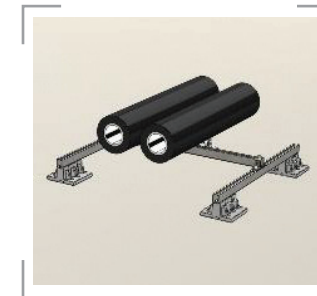
054:
Two Elevated 1"-3"
Pipe Rollers



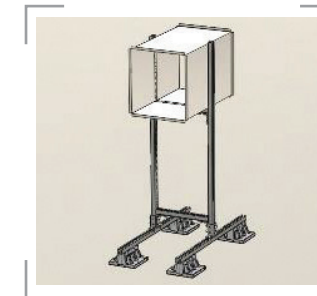
089:
Two Blox 2-Tier Bridge
Piping Rack with SCB07



091:
Four Blox With Elevated
4"-6" Rollers



092:
Four Blox with 4"-6"
Rollers for Insulated Pipe



093:
Four Blox Ductwork Stand

ROOF TOP BLOX®



Polypropylene copolymer roof top support block engineered to support load directly attached with straps, clips or clamps, or the Blox easily adapts with accessories listed below. Includes on-board galvanized strap for short piping runs. Install every 7' along piping. 250lbs./113 kg max. static load single point loading. 350lbs./158 kg max. static load with strut applied. Bundled in convenient 8 pack totes.

| PRODUCT | DESCRIPTION | MODEL | UPC | CUBIC FT./CASE | UNITS/CASE | LBS/CASE |
|---------|---|-------|--------------|----------------|------------|----------|
| 80600 | Roof Top Blox-Adj Pipe Support (8/pack) | RTB01 | 898417002010 | 1.054 | 8 | 10 |

1.5" BLOX HEIGHT EXTENSION



Polypropylene Height Extension fastens directly on top of Blox with two #10 screws provided. Raises Blox to 6" overall height and mimics features on top of the Blox. Extension can also be elevated for additional height using threaded extension rods (ROD03). 100lbs./45 kg max load when directly mounted to Blox or when elevated on threaded rods.

| PRODUCT | DESCRIPTION | MODEL | UPC | CUBIC FT./CASE | UNITS/CASE | LBS/CASE |
|---------|-------------------------------------|---------|--------------|----------------|------------|----------|
| 80601 | RTB 1.5" Height Extension (24/pack) | XTB0224 | 898417002027 | 0.600 | 24 | 11 |

EXTENSION RODS



Pair of 11-1/2" long, 1/2" diameter zinc coated threaded rods with nuts and washers. Use with XTB02, STR04, ROL05 or ROL06 to elevate piping up to 14" overall height. Insert minimum 1" into Blox. 24 count bagged pairs, bulk packed cartons.

| PRODUCT | DESCRIPTION | MODEL | UPC | CUBIC FT./CASE | UNITS/CASE | LBS/CASE |
|---------|--------------------|-------|--------------|----------------|------------|----------|
| 80603 | RTB Extension Rods | ROD03 | 898417002034 | 1.187 | 24 Pairs | 33 |

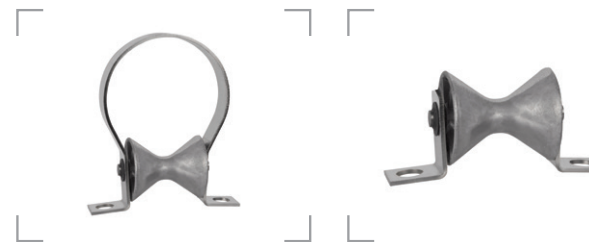
10" GALVANIZED SLOTTED STEEL STRUT CHANNEL



Mounts directly to Blox top in alignment trough with #14x1 sheet metal screws and washers or can be installed elevated with threaded extension rods (ROD03). Accepts strut clamps. 350lbs./158 kg max. static load with strut applied.

| PRODUCT | DESCRIPTION | MODEL | UPC | CUBIC FT./CASE | UNITS/CASE | LBS/CASE |
|---------|-----------------------------|-------|--------------|----------------|------------|----------|
| 80604 | RTB 10" Slotted Steel Strut | STR04 | 898417002041 | 0.277 | 24 | 17 |

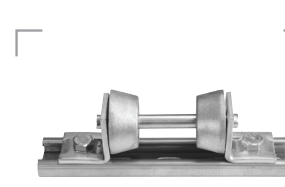
SMALL PIPE ROLLER



Small aluminum roller supports 1" to 3" diameter pipe. Can be mounted centrally or side by side on Blox (ROD03). Roller bracket can also be installed elevated on threaded extension rods. Use on long piping runs to allow for expansion and contraction of piping.

| PRODUCT | DESCRIPTION | MODEL | UPC | CUBIC FT./CASE | UNITS/CASE | LBS/CASE |
|---------|--|-------|--------------|----------------|------------|----------|
| 80605 | RTB 1" - 3" Small Pipe Roller | ROL05 | 898417002058 | 0.395 | 16 | 12.5 |
| 80611 | RTB 1" - 3" Small Pipe Roller, No Containment Band | ROL08 | 012181806111 | 0.395 | 16 | 6.4 |

LARGE PIPE ROLLER



Large aluminum roller supports 4" to 6" diameter pipe. Includes strut, bolts and mounting screws. Can be mounted directly on Blox or elevated on threaded extension rods (ROD03). Use on long piping runs to allow for expansion and contraction of piping. 350lbs./158 kg max. static load with large pipe roller applied.

| PRODUCT | DESCRIPTION | MODEL | UPC | CUBIC FT./CASE | UNITS/CASE | LBS/CASE |
|---------|-------------------------------|-------|-------------|----------------|------------|----------|
| 80606 | RTB 4" - 6" Large Pipe Roller | ROL06 | 89841700206 | 0.395 | 8 | 23 |

SECURING BRACKETS



Pair of brackets secure Blox directly to roof surface. Brackets lock onto engineered mounting tabs with two #12x3/4" screws, then glue down into place with structural adhesive (ADH12/ADH12WH). Securing Brackets anchor the Blox into final installed position and protect against movement due to moderate wind, water, and snow loads.

| PRODUCT | DESCRIPTION | MODEL | UPC | CUBIC FT./CASE | UNITS/CASE | LBS/CASE |
|---------|--------------------------|-------|--------------|----------------|------------|----------|
| 80607 | RTB Securing Bracket Set | SCB07 | 898417002072 | 0.277 | 32 Pairs | 14 |

M-1® STRUCTURAL ADHESIVE



Non-solvent based, flexible, high bond M-1 adhesive bonds Securing Brackets (SCB07) to all roof membrane systems and materials. Apply directly under Securing Brackets (SCB07). 10 oz. tube bonds 10 pairs of Securing Brackets (SCB07). (Not to be applied under Blox)

| PRODUCT | DESCRIPTION | MODEL | UPC | CUBIC FT./CASE | UNITS/CASE | LBS/CASE |
|---------|--------------------------------|---------|--------------|----------------|------------|----------|
| 80608 | RTB Structural Adhesive, Gray | ADH12 | 898417002126 | 0.667 | 24 | 26 |
| 80609 | RTB Structural Adhesive, White | ADH12WH | 012181806098 | 0.667 | 24 | 26 |

PRIMER FOR M-1® ADHESIVE



Primer required for bonding with ADH12 or ADH12WH to TPO roofing systems. One pint primes TPO surface for 35 pairs of securing brackets (SCB07).

| PRODUCT | DESCRIPTION | MODEL | UPC | CUBIC FT./CASE | UNITS/CASE | LBS/CASE |
|---------|------------------------|-------|--------------|----------------|------------|----------|
| 80610 | RTB TPO Primer (F1280) | PRI13 | 012181806104 | 0.198 | 4 | 5 |

| | |
|--|--|
| Body Material | Black UV stabilized Polypropylene Copolymer .100 to .135" wall thickness. |
| Base Material | 1" thick by 25psi, Type 4 closed cell structural foam. |
| Dimensions & Weight | 8-7/8" square by 4-1/2" high, height extension accessory adds 1-1/2" for 6" height requirements, Blox can be interlocked end to end for wide multi-piping platforms. Weight: 1lb per Blox |
| Load Bearing | Max load per Blox—Single Point Load: 250lbs./113 kg—Dual Point or Strut-Mounted Load: 350lbs./158 kg. Apply STR-04 slotted steel strut channel under heavy loads over 250lbs. |
| Spacing | Space Blox approximately every 7 feet along all piping. |
| Pipe Fastening | Screw indents guide fastening screws into special internal engineered thread gripping feature. #10 sheet metal screws recommended. Blox supplied with an on board perforated galvanized quick clamping strap for up to 2" pipe. Top surface easily adapts to all types of piping clamps, clips, slotted steel strut and 3/8" or 1/2" threaded rod. All pipe fastening and height adjustments done from top side only. |
| Accessories | 1-1/2" Polypropylene top height extender, 10" slotted steel strut, 11-1/2" threaded rod, pipe rollers, securing brackets, M-1 adhesive, and primer for M-1 adhesive. |
| Warranty | 20 year Roof Top Blox replacement against manufacturer's defects. |
| Applications | Blox engineered to install on flat roof surfaces for supporting gas, condensate or refrigeration lines, electrical conduit, ductwork or roof top walkways and mechanical equipment. Rated for temperatures up to 200°F/93°C. |
| Suggested Engineering Specification | Roof top support blocks for gas piping, plumbing, HVAC, conduit, cable tray, and mechanical equipment shall be Roof Top Blox (RTB01). The support blocks must be designed to eliminate roof penetrations, flashings or damage to roofing membrane. Support body shall be made of recycled UV-resistant Polypropylene Copolymer. Base platform material shall be 1" thick, 25psi, type 4 closed cell structural foam to distribute and evenly cushion loads. Support top surface shall have molded in pipe organizing saddles and strut mounting cradle. The top surface shall also have screw guide indents and engineered internal screw thread gripping feature. Block must accept 3/8" and 1/2" threaded rod (ROD03) using side entry nut slots to allow fast top side assembly and piping height adjustments. Aluminum rollers (ROL05 or ROL06) shall be installed on long piping runs. Securing brackets (SCB07) and adhesive (ADH12/ADH12WH) recommended for permanently securing Blox into its final installed position, anchoring against wind, rain and snow loads. |



IPSCORP.COM | ROOFTOPBLOX.COM

IPS CORPORATION

500 Distribution Parkway
Collierville, Tennessee 38017
USA

plumbing@ipscorp.com

Tel (800) 888-8312

Fax (901) 853-5008