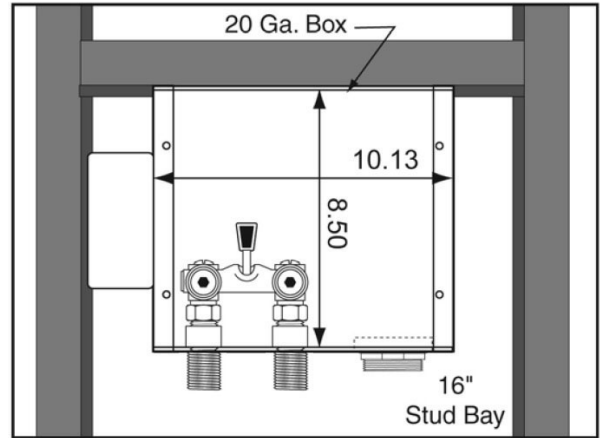
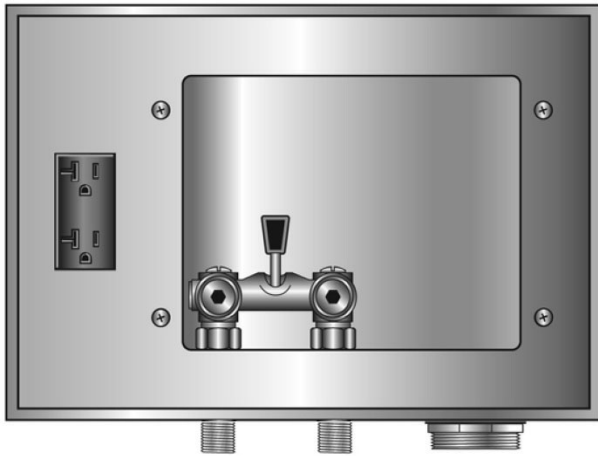


SPECIFICATION SUBMITTAL SHEET



RIGHT DRAIN GALVANIZED WMOB with Duplex Receptacle and Single Lever Valve



Specifications:

Furnish and install right drain galvanized washing machine outlet box with duplex receptacle and single lever valve. Unit shall be Guy Gray product code as manufactured by IPS Corporation.

Box Material:

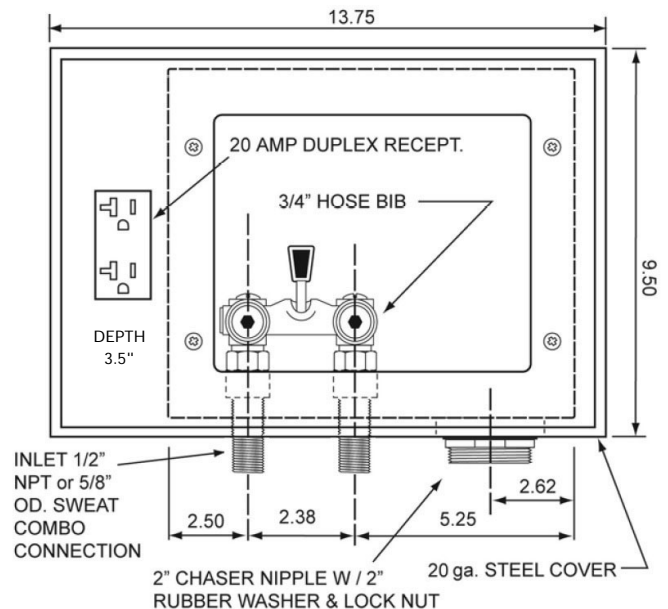
G90 Hot Dipped Galvanized Steel (unpainted)
20 gauge box and 20 gauge faceplate

Valve & Drain Options:

Domestic Valve with 1/2" MIP/Sweat connection furnished. 2" Threaded Drain. Valves comply with ASME A112.18.1

Receptacles:

UL Listed Receptacle. 110V Dryer.



Item #	Product Description	Model #	Quantity
82044	1/2" MIP/Sweat Conx. Single Lever Valve	WBE200	6

