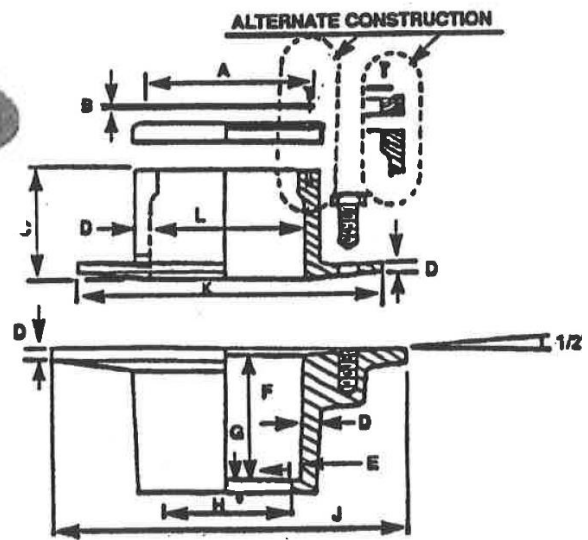


# SPECIFICATION SUBMITTAL SHEET



## LOS ANGELES STYLE SHOWER DRAIN

**Job Name:** \_\_\_\_\_ **Contractor:** \_\_\_\_\_  
**Job Location:** \_\_\_\_\_ **Approval:** \_\_\_\_\_  
**Engineer:** \_\_\_\_\_ **Contractor's PO#:** \_\_\_\_\_  
**Approval:** \_\_\_\_\_ **Representative:** \_\_\_\_\_



### Specifications

**Series 5000**  
**Los Angeles Style Shower Drain**  
 Available with Plastic Flange and Body,  
 Cast Iron Flange and Plastic Body, or  
 Cast Iron Flange and Body  
 Manufactured in compliance with  
**ASME A112.18.2-2005/CSA B125.2-2005.**

Dimensions			
A	3-1/4"	G	3/16"
B	.050"	H	See Below
C	2"	J	7"
D	1/4"	K	6"
E	7/32"	L	3"
F	2-1/2"		

Select Part# Below for Style/Size/Finish of Product Specified:

√	AB&A Part #	Product Code	Material	Finish	Outlet Type (Dimension H)	
	5000	67000	ABS Flange & Body	Chrome Plated	2" Solvent Weld	
	5008	67136	PVC Flange & Body	Chrome Plated	2" Solvent Weld	
	5015	67137	ABS Flange & Body	Chrome Plated	2" No-Caulk SUREFIT	
	5020	67138	PVC Flange & Body	Chrome Plated	2" No-Caulk SUREFIT	
	5040	67001	Cast Iron Flange & ABS Body	Chrome Plated	2" Solvent Weld	
	5045	67140	Cast Iron Flange & PVC Body	Chrome Plated	2" Solvent Weld	
	5050	67141	Cast Iron Flange & ABS Body	Chrome Plated	2" No-Caulk SUREFIT	
	5060	67142	Cast Iron Flange and Body	Chrome Plated	1-1/2" IPS	
	5065	67002	Cast Iron Flange and Body	Chrome Plated	2" IPS	
	5070	67144	Cast Iron Flange and Body	Chrome Plated	2" Caulk	
	5073	67003	Cast Iron Flange and Body	Chrome Plated	2" No Hub	
	5074	67146	Cast Iron Flange and Body	Chrome Plated	2" No-Caulk / Rubber Gasket	

