

SPECIFICATION SUBMITTAL SHEET



BRONZE SHOWER DRAINS WITH CAST BRASS GRATE

Job Name: _____ **Contractor:** _____
Job Location: _____ **Approval:** _____
Engineer: _____ **Contractor's PO#:** _____
Approval: _____ **Representative:** _____

Specifications

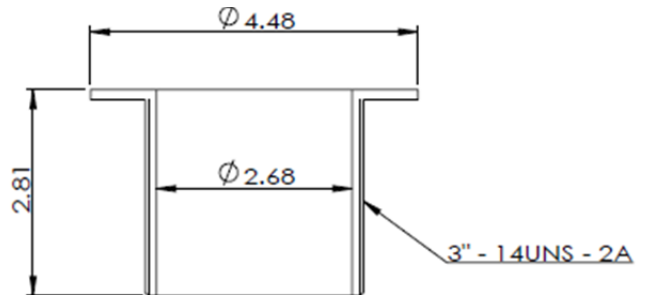
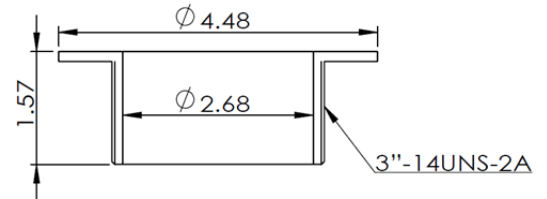
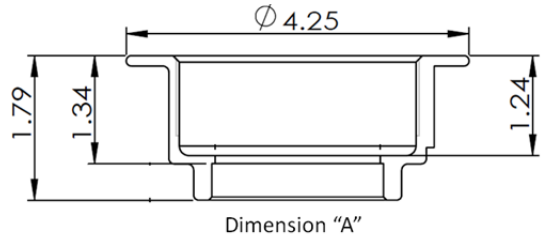
Series 6600

**Bronze Shower Drain
with Square Heavy Cast Brass Grate**

**Available with 1-3/8" or 2-1/2"
Barrel Length**

Drain Body Outlet Options:

- 2" Caulk
- 2" IPS
- 2" Sweat



Select Part# Below for Style/Size/Finish of Product Specified:

v	AB&A Part #	Product Code	Drain Outlet – "A"	Barrel Length	Grate/Barrel Finish
	6600	67190	2" Caulk	1-3/8"	Chrome
	6605	67192	2" Caulk	2-1/2"	Chrome
	6610	67193	2" IPS	1-3/8"	Chrome
	6615	67044	2" IPS	2-1/2"	Chrome
	6620	67196	2" Sweat	1-3/8"	Chrome
	6622	67197	2" Sweat	2-1/2"	Chrome

