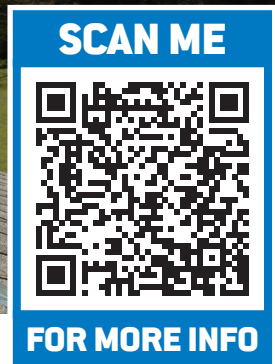




NEW

Type B Ventilation

Flashings, Adjustable Storm Collars, and Multi-Cap™ Vent Caps.



Type B Vent Flashings

This durable all metal flashing is made for up to 12/12 pitched roofs and double wall pipes, also known as Type-B vent pipes. Make sure to use the proper FHA style flashing model to help with the pipe angle alignment. This product is available in a range of sizes from 3-8 inches.



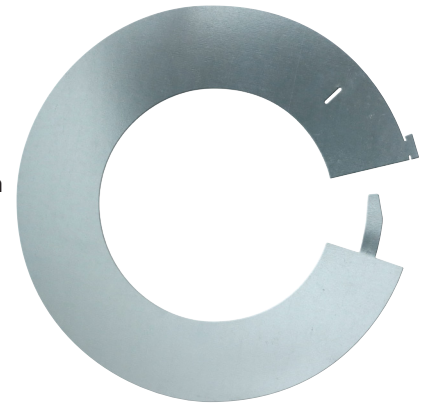
Features:

- 28 gauge G-90 ASTM-A653 CS Galvanized steel
- Conical shape allows adjusting from 0/12 to 8/12 roof pitch
- Steep pitch models adjust from 8/12 to 12/12 roof pitch
- Cone and base seams have sealant on the inside of flashing
- Complies with ANSI / UL 441

PRODUCT	DESCRIPTION	MODEL	UNITS/ CASE
81575	3" Type B Flashing	TB3	12
81576	4" Type B Flashing	TB4	12
81577	5" Type B Flashing	TB5	12
81578	6" Type B Flashing	TB6	12
81579	7" Type B Flashing	TB7	6
81580	8" Type B Flashing	TB8	6
81585	3" Type B Flashing – Steep Pitch	TB3SP	12
81586	4" Type B Flashing – Steep Pitch	TB4SP	12

Type B Vent Adjustable Storm Collars

The storm collar works together with the Type B Vent Flashing to provide a waterproof seal where the stack passes through the roof. The storm collar is installed and sealed directly above the flashing.



Features:

- 28 gauge G-90 ASTM-A653 CS Galvanized steel
- Adjustable slip fit tab provides snug fit around vent
- Locking tab secures installation
- 7"-9" storm collar accomodates multi-sizes.
- Complies with ANSI / UL 441

PRODUCT	DESCRIPTION	MODEL	UNITS/ CASE
81587	3" Type Adj Storm Collar	SC3	24
81588	4" Type Adj Storm Collar	SC4	24
81589	5" Type Adj Storm Collar	SC5	24
81590	6" Type Adj Storm Collar	SC6	24
81591	7-9" Type Adj Storm Collar	SC79	24

See next page



Stamped Storm Collar

The stamped storm collar works together with the Type B Vent Flashing to provide a waterproof seal where the stack passes through the roof. The storm collar is installed and sealed directly above the flashing.



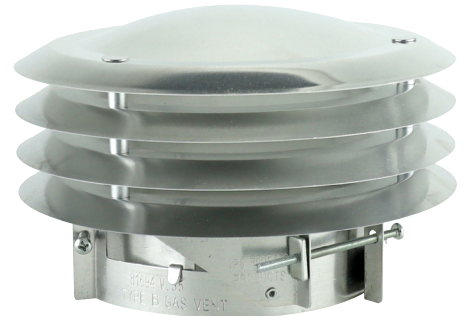
Features:

- 28 gauge G-90 ASTM-A653 CS Galvanized steel
- Complies with ANSI / UL 441

PRODUCT	OUTSIDE DIAMETER	MODEL	UNITS/CASE
81597	3" Type B Storm Collar Stamped	SC3S	24
81598	4" Type B Storm Collar Stamped	SC4S	24
81601	5" Type B Storm Collar Stamped	SC5S	24
81602	6" Type B Storm Collar Stamped	SC6S	24

Multi-Cap™ Type B Vent Caps

The Multi-Cap™ is recommended for flue, hot stack, or Type B installations. It is made of heavy-duty aluminum, which will help the vent resist rust and corrosion while also preventing weather, debris, and birds from coming in the flue.



Features:

- Non-clogging positive draft design
- Clamp fittings adjustable for all standard sizes
- Aluminum construction
- Complies with ANSI / UL 441

PRODUCT	OUTSIDE DIAMETER	MODEL	UNITS/CASE
81694	2-7/8" to 4-7/8"	VC35	12
81695	4-7/8" to 6-7/8"	VC57	12
81696	6-7/8" to 8-7/8"	VC79	12
81697	8-7/8" to 10-7/8"	VC911	1
81698	11-7/8" to 14"	VC1214	1