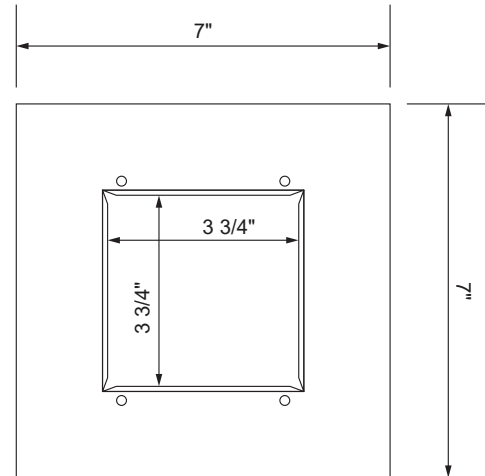
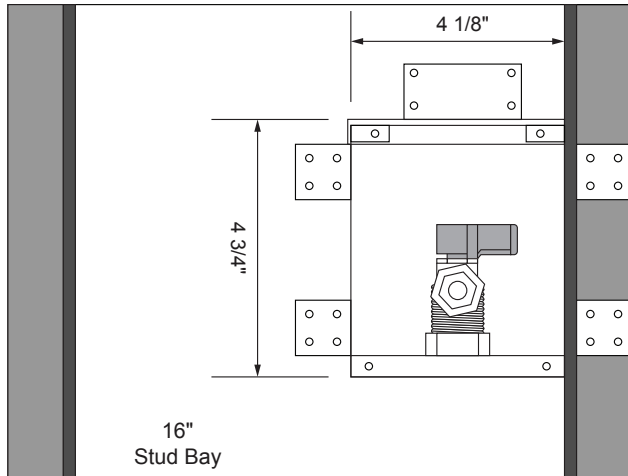




White Powder Coated Ice Maker Outlet Box With Lead Free Valves



MIB Series Ice Maker Outlet Box Installation Instructions

1. Remove the faceplate that is attached to the ice maker box and save for future installation.
2. Using either nails or screws, mount the box to the stud via the flanges/ holes on the side of the box.
3. Box can be mounted on either side of the stud bay, at any height, in any orientation.
4. Connect the water supply piping to the ice maker box valve using correct connections.
5. Check all local codes for appropriate approvals and requirements.
6. To the 1/4" outlet of valve attach either:
 - a) Copper supply tubing via compression connection.
 - b) Poly supply tubing via compression connection - brass insert into poly tube is required
 - c) Braided hose via threaded connection.
7. Connect to the inlet connection of the refrigerator.

PRODUCT	DESCRIPTION	MODEL	UNITS/CASE
88133	Brass Qtr Turn Valve, Installed, 1/2" Sweat Conx.	MIB1AB	5
88532	Brass Qtr Turn Valve, Installed, 1/2" CPVC Conx.	MIB2AB	5
88178	Brass Qtr Turn Valve, Installed, 1/2" PEX Conx.	MIB3AB	5
88534	Brass Qtr Turn Valve, Installed, 1/2" Sweat Conx. Contractor Pack	MIB4AB	10
88535	Brass Qtr Turn Valve, Installed, 1/2" Wirsbo Conx.	MIB5AB	5

PRODUCT	DESCRIPTION	MODEL	UNITS/CASE
Replacement Parts			
97034	2" CP Slipnuts for Drain	5062	1
97036	2" Rubber Gaskets for Drain	L2411	1
97046	2" Flange Nuts for Drain	5225	1
90504	Faceplate	90504	1
89893	Face Plate Screws (4-Pack)	89893	1



500 Distribution Parkway, Collierville, TN 38017 • Phone: 800-888-8312 • Fax: 901-853-5008 • www.ipscorp.com